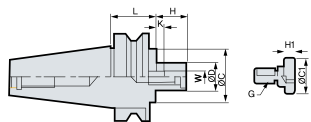
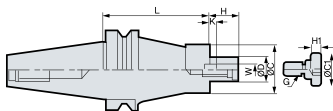


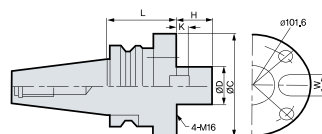
BT-FMA



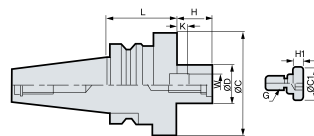
Rys. 1



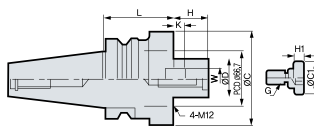
Rys. 2



Rys. 3



Rys. 4



Rys. 5

(mm)

Oznaczenie	Stan	Średnica obróbki	ϕD	L	ϕC	H	W	K	G	$\phi C1$	H1	kg	Rys.
BT30- FMA22.225 -30		50	22.225	30	40	18	8	3.5	M10	28	9	0.6	1
FMA25.4 - 45	●	80	25.4	45	50	22	9.5	5	M12	33	10	0.8	4
BT40- FMA25.4 - 45	●	80	25.4	45	50	22	9.5	5	M12	33	10	1.4	1
90	●	80	25.4	90	50	22	9.5	5	M12	33	10	3.1	1
FMA31.75 - 45	●	100	31.75	45	60	30	12.7	7	M16	40	10	1.6	1
75	●	100	31.75	75	60	30	12.7	7	M16	40	10	3.0	1
FMA38.1 - 60	●	125	38.1	60	80	34	15.9	9	M20	50	14	2.9	4
BT50- FMA25.4 - 45	●	80	25.4	45	50	22	9.5	5	M12	33	10	3.8	1
90	●	80	25.4	90	50	22	9.5	5	M12	33	10	4.5	1
150	●	80	25.4	150	50	22	9.5	5	M12	33	10	5.5	2
FMA31.75 - 45	●	100	31.75	45	60	30	12.7	7	M16	40	10	4.6	1
75	●	100	31.75	75	60	30	12.7	7	M16	40	10	5.2	1
105	●	100	31.75	105	60	30	12.7	7	M16	40	10	6.0	2
FMA38.1 - 45	●	125	38.1	45	80	34	15.9	9	M20	50	14	4.3	1
75	●	125	38.1	75	80	34	15.9	9	M20	50	14	5.5	1
FMA50.8 - 45	●	160	50.8	45	100	36	19.05	10	M24	65	14	4.8	1
75	●	160	50.8	75	100	36	19.05	10	M24	65	14	6.8	1
FMA47.625 - 75	●	200	47.625	75	128	38	25.4	12.5	-	-	-	7.6	3

- Typ A jest do głowicy frezarskiej do płaszczyzn zgodnie z normą JIS B4113.
- Typ B oraz C są to trzpienie dla głowicy frezarskiej do płaszczyzn T-MAX oraz freza do frezowania bocznego.
- Masa z wyjątkiem ciężaru korpusu freza.
- Klin i śruba w załączeniu.
- Klucz opcjonalny


● : Pozycja standardowa ○ : Pozycja na zamówienie

Części

Oprawka	Części zapasowe				
	Standardowe				Opcjonalne
	Wpust	Śruba zaciskowa	Śruba imbusowa	Śruba imbusowa	Klucz
Rodzaj					
FMA 22.225	K8.0(A)	MBA-M10	BX0310	BX1225	LW-8
FMA 25.4	K9.5(B)	MBA-M12	BX0412	-	LW-10
FMA 31.75	K12.7(D)	MBA-M16	BX0515	BX2030	LW-14
FMA 38.1	K15.87(F)	MBA-M20	BX0616	BX1635	LW-17
FMA 50.8	K19.05(G)	MBA-M24	BX0820	-	LW-19
FMA 47.625	K25.4(H)	-	BX1020	BX2035	-

BT-FMB

(mm)

Oznaczenie	Stan	Średnica obróbki	ØD	L	ØC	H	W	K	G	ØC1	H1		Rys.
BT40 - FMB25.4 - 60		80	25.4	60	80	26	9.5	5	M12	33	10	3.6	4
		80	25.4	90	80	26	9.5	5	M12	33	10	4.8	4
FMB38.1 - 60		100/125	38.1	60	85	26	15.9	9	M20	50	14	3.5	4
FMB27 - 60		80	27	60	80	26	12	6	M12	33	10	3.6	4
		80	27	90	80	26	12	6	M12	33	10	4.8	4
FMB40 - 60		100/125	40	60	85	26	16	8.5	M20	50	14	3.5	4
BT50 - FMB25.4 - 45		80	25.4	45	80	26	9.5	5	M12	33	10	4.0	1
		80	25.4	90	80	26	9.5	5	M12	33	10	5.8	1
150		80	25.4	150	80	26	9.5	5	M12	33	10	8.2	2
FMB38.1 - 45		100/125	38.1	45	85	26	15.9	9	M20	50	14	4.6	1
		100/125	38.1	75	85	26	15.9	9	M20	50	14	6.0	1
105		100/125	38.1	105	85	26	15.9	9	M20	50	14	8.7	2
FMB38.1F - 75		160	38.1	75	110	26	15.9	9	M20	50	14	6.6	5
FMB27 - 45		80	27	45	80	26	12	6	M12	33	10	4.0	1
		80	27	90	80	26	12	6	M12	33	10	5.8	1
150		80	27	150	80	26	12	6	M12	33	10	8.2	2
FMB40 - 45		100/125	40	45	85	26	16	8.5	M20	50	14	4.6	1
		100/125	40	75	85	26	16	8.5	M20	50	14	6.0	1
105		100/125	40	105	85	26	16	8.5	M20	50	14	8.7	2
FMB40F - 75		160	40	75	110	26	16	8.5	M20	50	14	6.6	5
FMB60 - 75		200	60	75	140	25	25.4	12.5	-	-	-	7.9	3

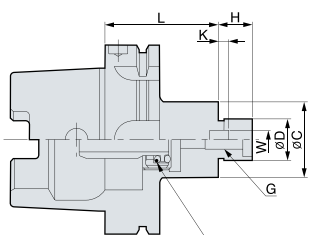
● : Pozycja standardowa ○ : Pozycja na zamówienie

● Części

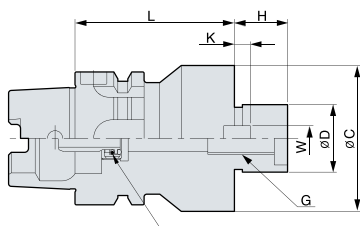
Oprawka	Części zapasowe				
	Standardowe				Opcjonalne
	Wpust	Śruba docisku	Śruba imbusowa	Śruba imbusowa	Klucz
Rodzaj					
FMB 25.4	K9.5	MBA - M12	BX0412	BX1225	LW-10
FMB 38.1	K15.87(F)	MBA - M20	BX0616	-	LW-17
FMB 38.1F	K15.87(F)	MBA - M20	BX0616	BX1230	LW-17
FMB 27	K12.0	MBA - M16	BX0516	BX1235	LW-14
FMB 40	K15.87(F)	MBA - M20	BX0616	-	LW-17
FMB 40F	K15.87(F)	MBA - M20	BX0616	BX1235	LW-17
FMB 60	K25.4(H)	-	BX1020	BX1645	-

HSK-FMC

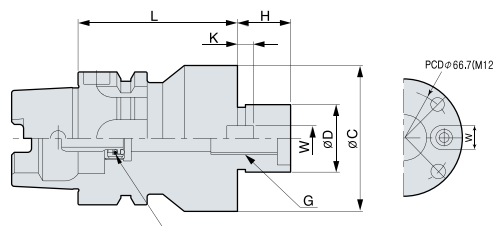
DIN69893-1, ISO 12164-1 : 2001



Rys. 1



Rys. 2



Rys. 3

(mm)

Oznaczenie	Stan	Średnica obróbki	øD	L	øC	H	W	K	G	kg	Rys.
HSK40A -FMC16 -50		40	16	50	38	17	8.0	5.0	M8	0.7	1
FMC22 -45		50/63	22	45	48	19	10.0	5.6	M10	0.9	2
FMC25.4-60		80	25.4	60	70	20	9.5	6.0	M12	1.0	2
HSK50A -FMC16 -40		40	16	40	38	17	8.0	5.0	M8	0.9	1
FMC22 -50		50/63	22	50	48	19	10.0	5.6	M10	1.0	1
FMC25.4-60		80	25.4	60	70	20	9.5	6.0	M12	1.2	1
HSK63A -FMC16 -50		40	16	50	38	17	8.0	5.0	M8	1.1	1
FMC22 -50		50/63	22	50	48	19	10.0	5.6	M10	1.2	1
FMC25.4-60		80	25.4	60	70	20	9.5	6.0	M12	1.4	1
FMC27 -60		80	27	60	60	21	12.0	6.3	M12	1.4	1
FMC32 -60		100	32	60	78	24	14.0	7.0	M16	1.8	2
FMC40 -60		125/160	40	60	89	27	16.0	8.0	M20	2.0	3
HSK100A-FMC16 -60		40	16	60	38	17	8.0	5.0	M8	2.3	1
FMC22 -50		50/63	22	50	48	19	10.0	5.6	M10	2.5	1
FMC25.4-60		80	25.4	60	70	20	9.5	6.0	M12	2.6	1
FMC27 -50		80	27	50	60	21	12.0	6.3	M12	2.6	1
FMC32 -50		100	32	50	78	24	14.0	7.0	M16	2.8	2
FMC40 -60		125/160	40	60	89	27	16.0	8.0	M20	3.1	3

- Masa z wyjątkiem ciężaru korpusu freza.
- Klucz opcjonalny

● : Pozycja standardowa ○ : Pozycja na zamówienie

Przykład zamówienia

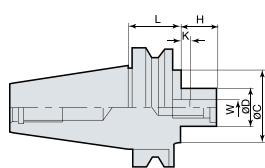
- Typ standardowy : HSK63A-FMC22-50
- Typ do wyważania : HSK63A-FMC22-50B
- Typ wyważony : HSK63A-FMC22-50BS

Części

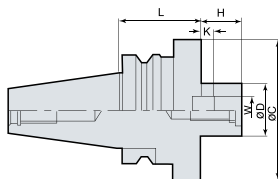
Oprawka	Części zamienne				
	Standardowe				Opcjonalne
	Wpust	Śruba docisku	Śruba imbusowa	Śruba imbusowa	Klucz
Typ					
FMC16	K8.0(A)	-	BX0310	BX0820	LW-6
FMC22	K10.0(C)	-	BX0412	BX1030	LW-8
FMC25.4	K9.5(B)	-	BX0515	BX1225	LW-10
FMC27	K12.0	MBA-M12	BX0616	BX1235	LW-10
FMC32	K14.0	MBA-M16	BX0820	BX1335	LW-14
FMC40	K15.87(F)	MBA-M20	BX0616	-	LW-17

* Proszę zamawiać oddzielnie dla MBA-M12 w przypadku FMC27

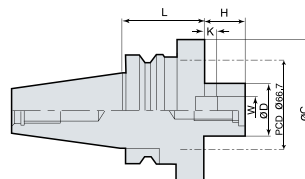
BT-FMC



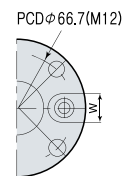
Rys. 1



Rys. 2



Rys. 3






(mm)

Oznaczenie	Stan	Średnica obróbki	øD	L	øC	H	W	K	G	kg	Rys.
BT30 - FMC 16 - 45	●	40	16	45	38	17	8.0	5.0	M8	1.0	1
FMC 22 - 45	●	50/63	22	45	48	19	10.0	5.6	M10	1.2	2
FMC 27 - 50		80	27	50	60	21	12.0	6.3	M12	1.5	2
BT40 - FMC 16 - 60	●	40	16	60	38	17	8.0	5.0	M8	1.4	1
FMC 22 - 45	●	50/63	22	45	48	19	10.0	5.6	M10	2.0	1
90		50/63	22	90	48	19	10.0	5.6	M10	2.1	1
FMC25.4 - 50		80	25.4	50	70	20	10.0	6.0	M12	2.5	2
90		80	25.4	90	70	20	10.0	6.0	M12	2.7	2
FMC 27 - 60	●	80	27	60	60	21	12.0	6.3	M12	2.5	2
90		80	27	90	60	21	12.0	6.3	M12	3.4	2
FMC 32 - 60	●	100	32	60	78	24	14.0	7.0	M16	3.4	2
90		100	32	90	78	24	14.0	7.0	M16	3.4	2
FMC38.1 - 50		100	38.1	50	85	22	15.9	7.0	M16	4.7	2
90		100	38.1	90	85	22	15.9	7.0	M16	4.8	2
FMC 40 - 50		125/160	40	50	89	27	16.0	8.0	M20	5.1	3
BT50 - FMC 16 - 60	●	40	16	60	38	17	8.0	5.0	M8	3.5	1
FMC 22 - 40	●	50/63	22	60	48	19	10.0	5.6	M10	3.6	1
FMC25.4 - 60		80	25.4	40	70	20	10.0	6.0	M12	4.1	1
90		80	25.4	90	70	20	10.0	6.0	M12	5.5	1
150		80	25.4	150	70	20	10.0	6.0	M12	7.3	1
FMC 27 - 40		80	27	40	60	21	12.0	6.3	M12	4.1	1
90		80	27	90	60	21	12.0	6.3	M12	5.5	1
150		80	27	150	60	21	12.0	6.3	M12	7.3	1
FMC 32 - 45		100	32	45	78	24	14.0	7.0	M16	4.2	1
75		100	32	75	78	24	14.0	7.0	M16	5.5	1
105		100	32	105	78	24	14.0	7.0	M16	6.8	1
FMC38.1 - 50		100	38.1	50	85	22	15.9	7.0	M16	5.8	1
75		100	38.1	75	85	22	15.9	7.0	M16	6.0	1
105		100	38.1	105	85	22	15.9	7.0	M16	6.4	1
FMC 40 - 50		125/160	40	50	89	27	16.0	8.0	M20	7.6	3

● : Pozycja standardowa ○ : Pozycja na zamówienie

● Części

Oprawka	Części zamienne				
	Standardowe				Opcjonalne
	Wpust	Śruba docisku	Śruba imbusowa	Śruba imbusowa	Klucz
Rodzaj					
FMC 16	K8.0(A)	-	BX0310	BX0820	LW-6
FMC 22	K10.0(C)	-	BX0412	BX1030	LW-8
FMC 25.4	K9.5(B)	-	BX0515	BX1225	LW-10
FMC 27	K12.0	MBA-M12	BX0616	BX1235	LW-10
FMC 32	K14.0	MBA-M16	BX0820	BX1335	LW-14
FMC38.1	K15.87(F)	MBA-M16	BX0616	BX1635	LW-14
FMC40	K15.87(F)	MBA-M20	BX0616	-	LW-17

* Proszę zamawiać oddzielnie dla MBA-M12 w przypadku FMC27