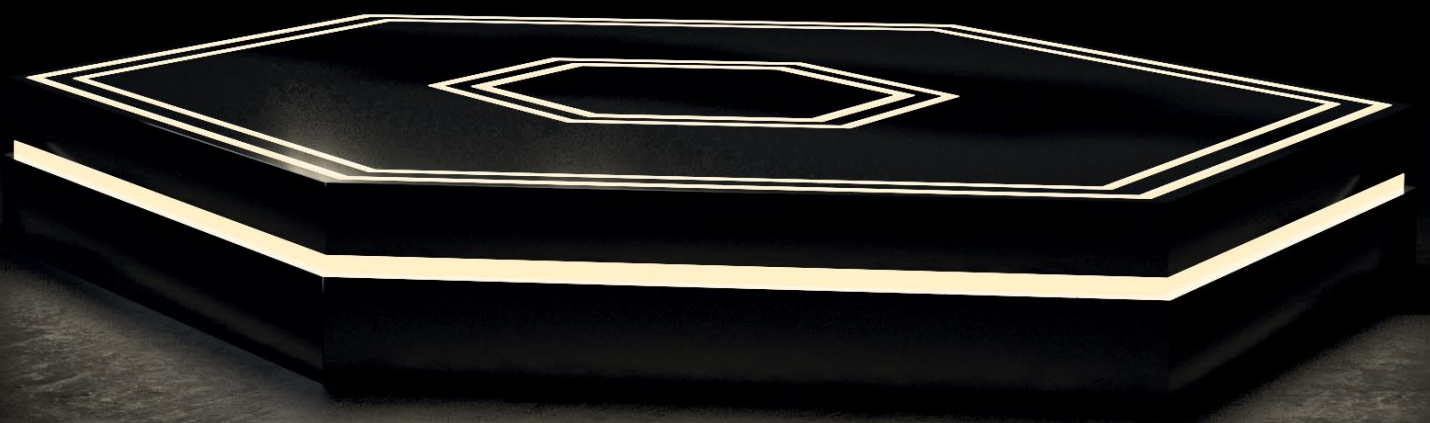




# OPRAWKI NARZĘDZIOWE TOOLHOLDERS

**JIS B 6339**  
**(MAS 403 BT)**



POLTRA Sp. z o.o.

ul. Grabskiego 42, tel. 15 840 21 00, e-mail: [poltra@poltra.pl](mailto:poltra@poltra.pl) [www.poltra.pl](http://www.poltra.pl)

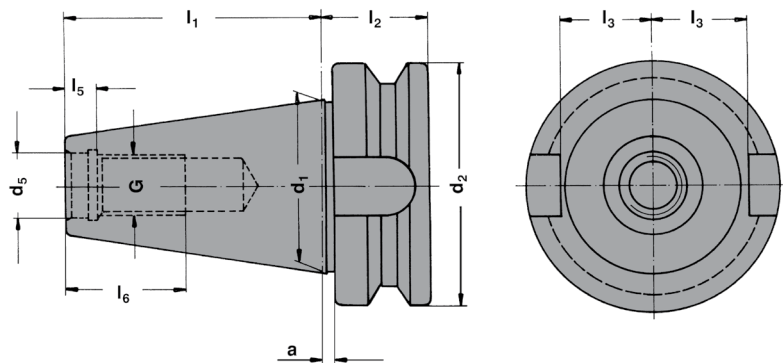


2

Wstępnie wyważona  
Pre-balanced

G 6,3 15.000 min<sup>-1</sup>

G 2,5 Wyważenie za dodatkową opłatą  
G 2.5 Fine balancing at extra charge

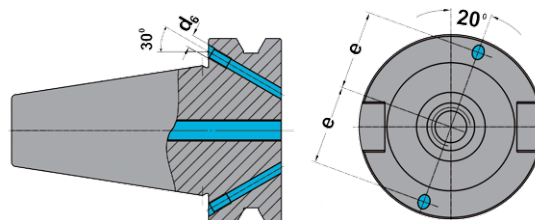


| SK | d <sub>1</sub> | G   | d <sub>5</sub> | d <sub>2</sub> | a | l <sub>1</sub> | l <sub>2</sub> | l <sub>3</sub> | l <sub>5</sub> | l <sub>6</sub> | e  | d <sub>6</sub> |
|----|----------------|-----|----------------|----------------|---|----------------|----------------|----------------|----------------|----------------|----|----------------|
| 30 | 31,75          | M12 | 12,5           | 46             | 2 | 48,4           | 22             | 16,3           | 7,0            | 24             | -  | -              |
| 40 | 44,45          | M16 | 17,0           | 63             | 2 | 65,4           | 27             | 22,5           | 8,2            | 32             | 27 | M4             |
| 50 | 69,85          | M24 | 25,0           | 100            | 3 | 101,8          | 38             | 35,3           | 11,0           | 47             | 42 | M6             |

## Z wewnętrznym doprowadzaniem chłodziwa przez kołnierz - AD/B

With internal coolant through the collar - form AD/B

Dostawa ze śrubami bez łba w pozycji zamkniętej  
Delivery with headless screws in closed position



**Materiał:** Stal stopowa nawęglana, wytrzymałość na rozciąganie rdzenia min. 800 N / mm<sup>2</sup>.  
Hartowane dyfuzyjnie HRC 60 ± 2 (HV 700 ± 50), głębokość hartowania 0,8 mm ± 0,2 mm,  
czernione i precyzyjnie oszlifowane.

**Typ AD/B:** Dostawa w formie AD, typ B zamykany na odkręcane śruby bez łba.

**Dokładność:** Jakość stożka <AT 3 zgodnie z DIN 7187 i DIN 2080.

**Material:** Alloyed case-hardened steel, tensile core strength of min. 800 N / mm<sup>2</sup>.  
Case hardened HRC 60 ± 2 (HV 700 ± 50), hardening depth 0.8 mm ± 0.2 mm,  
black-finished and precisely grinded.

**Form AD/B:** Delivery in form AD, type B closed with releasable headless screws.

**Accuracy:** Quality of taper < AT 3 according to DIN 7187 and DIN 2080.



|   |   |  |   |
|---|---|--|---|
|  <p>2.05</p>   |  <p>2.06</p>   |  <p>2.09</p>   |  <p>2.10</p>   |
|  <p>2.11</p>   |  <p>2.13</p>   |  <p>2.20</p>   |  <p>2.21</p>   |
|  <p>2.22</p>   |  <p>2.23</p>   |  <p>2.25</p>   |  <p>2.27</p>   |
|  <p>2.29</p> |  <p>2.30</p> |  <p>2.31</p> |  <p>2.32</p> |
|  <p>2.33</p> |  <p>2.34</p> |  <p>2.36</p> |  <p>2.37</p> |
|  <p>2.41</p> |  <p>2.42</p> |  <p>2.43</p> |  <p>2.44</p> |
|  <p>2.41</p> |  <p>2.42</p> |  <p>2.43</p> |  <p>2.44</p> |



2

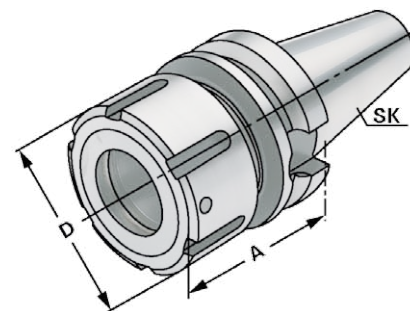


**Zastosowanie:**

Do mocowania narzędzi z chwytem walcowym w tulejach zaciskowych OZ.

**Application:**

For mounting straight-shank tools in collets.



JIS B 6339



AD/B

$\nearrow \leq 0,003$

G6,3  
15.000 min<sup>-1</sup>



14.04

| Kod produktu<br>Order no. | SK    | Zakres średnic<br>Capacity | A  | D  |
|---------------------------|-------|----------------------------|----|----|
| 305.01.16 *               | BT 30 | 2 – 16 (OZ 16)             | 60 | 43 |
| 305.01.25 *               | BT 30 | 2 – 25 (OZ 25)             | 80 | 60 |
| 406.01.16                 | BT 40 | 2 – 16 (OZ 16)             | 70 | 43 |
| 406.01.25                 | BT 40 | 2 – 25 (OZ 25)             | 70 | 60 |
| 406.01.32                 | BT 40 | 3 – 32 (OZ 32)             | 90 | 72 |
| 506.01.25                 | BT 50 | 2 – 25 (OZ 25)             | 85 | 60 |
| 506.01.32                 | BT 50 | 3 – 32 (OZ 32)             | 90 | 72 |

\* JIS B 6339 Typ AD

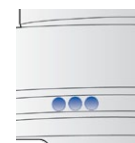
\* JIS B 6339 form AD

**W zestawie:**  
**Delivery:**

Wyważona nakrętka  
With ball bearing clamping nut

**Wersja z wyważeniem**

Balanced type



Kod produktu  
Order no.

Rozmiar  
Size

**Wyważanie w tolerancji G 2,5**  
Balancing at G 2.5

W25

**Bez raportu z wyważania**  
Without balancing report

W25.2

**Z raportem z wyważania**  
With balancing report

**Wyważanie niewyważonych narzędzi**  
Balancing of unbalanced tools

W25.1

**Bez raportu z wyważania**  
Without balancing report



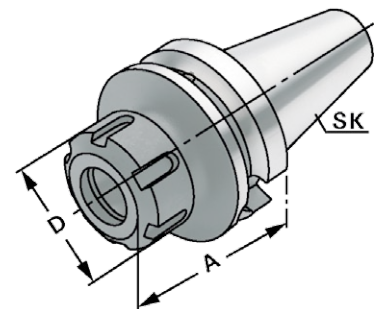


**Zastosowanie:**

Do mocowania narzędzi z chwytem walcowym w tulejach zaciskowych ER.

**Application:**

For mounting straight-shank tools in collets.



JIS B 6339 AD  $\sqrt{\text{R}} \leq 0,003$  G6,3 15.000 min<sup>-1</sup> 14.04

| Kod produktu<br>Order no. | SK    | Zakres średnic<br>Capacity | A   | D  |
|---------------------------|-------|----------------------------|-----|----|
| 305.02.10                 | BT 30 | 1 - 10 (ER 16)             | 70  | 32 |
| 305.02.13                 | BT 30 | 2 - 13 (ER 20)             | 70  | 35 |
| 305.02.16                 | BT 30 | 2 - 16 (ER 25)             | 70  | 42 |
| 305.02.20                 | BT 30 | 2 - 20 (ER 32)             | 70  | 50 |
| 305.02.26                 | BT 30 | 3 - 26 (ER 40)             | 70  | 63 |
|                           |       |                            |     |    |
| 305.02.10.1               | BT 30 | 1 - 10 (ER 16)             | 100 | 32 |
| 305.02.13.1               | BT 30 | 2 - 13 (ER 20)             | 100 | 35 |
| 305.02.16.1               | BT 30 | 2 - 16 (ER 25)             | 100 | 42 |
| 305.02.20.1               | BT 30 | 2 - 20 (ER 32)             | 100 | 50 |
|                           |       |                            |     |    |
| 405.02.10                 | BT 40 | 1 - 10 (ER 16)             | 63  | 32 |
| 405.02.13                 | BT 40 | 2 - 13 (ER 20)             | 70  | 35 |
| 405.02.16                 | BT 40 | 2 - 16 (ER 25)             | 60  | 42 |
| 405.02.20                 | BT 40 | 2 - 20 (ER 32)             | 70  | 50 |
| 405.02.26                 | BT 40 | 3 - 26 (ER 40)             | 80  | 63 |
|                           |       |                            |     |    |
| 405.02.10.1               | BT 40 | 1 - 10 (ER 16)             | 100 | 32 |
| 405.02.13.1               | BT 40 | 2 - 13 (ER 20)             | 100 | 35 |
| 405.02.16.1               | BT 40 | 2 - 16 (ER 25)             | 100 | 42 |
| 405.02.20.1               | BT 40 | 2 - 20 (ER 32)             | 100 | 50 |
| 405.02.26.1               | BT 40 | 3 - 26 (ER 40)             | 100 | 63 |

W zestawie:  
Delivery:

Wyważona nakrętka  
With balanced clamping nut

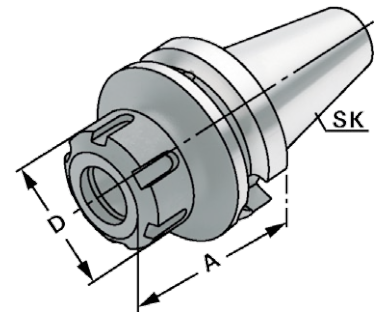




2



**Zastosowanie:**  
Do mocowania narzędzi z chwytem walcowym w tulejach zaciskowych ER.  
**Application:**  
For mounting straight-shank tools in collets.



JIS B 6339



AD/B

$\nearrow \leq 0,003$

G6,3  
15.000 min<sup>-1</sup>



14.04

| Kod produktu<br>Order no. | SK    | Zakres średnic<br>Capacity | A   | D  |
|---------------------------|-------|----------------------------|-----|----|
| 406.02.10                 | BT 40 | 1 – 10 (ER 16)             | 63  | 32 |
| 406.02.13                 | BT 40 | 2 – 13 (ER 20)             | 70  | 35 |
| 406.02.16                 | BT 40 | 2 – 16 (ER 25)             | 60  | 42 |
| 406.02.20                 | BT 40 | 2 – 20 (ER 32)             | 70  | 50 |
| 406.02.26                 | BT 40 | 3 – 26 (ER 40)             | 80  | 63 |
|                           |       |                            |     |    |
| 406.02.10.1               | BT 40 | 1 – 10 (ER 16)             | 100 | 32 |
| 406.02.13.1               | BT 40 | 2 – 13 (ER 20)             | 100 | 35 |
| 406.02.16.1               | BT 40 | 2 – 16 (ER 25)             | 100 | 42 |
| 406.02.20.1               | BT 40 | 2 – 20 (ER 32)             | 100 | 50 |
| 406.02.26.1               | BT 40 | 3 – 26 (ER 40)             | 100 | 63 |
|                           |       |                            |     |    |
| 406.02.10.2               | BT 40 | 1 – 10 (ER 16)             | 160 | 32 |
| 406.02.13.2               | BT 40 | 2 – 13 (ER 20)             | 160 | 35 |
| 406.02.16.2               | BT 40 | 2 – 16 (ER 25)             | 160 | 42 |
| 406.02.20.2               | BT 40 | 2 – 20 (ER 32)             | 160 | 50 |
| 406.02.26.2               | BT 40 | 3 – 26 (ER 40)             | 160 | 63 |
|                           |       |                            |     |    |
| 406.02.10.3               | BT 40 | 1 – 10 (ER 16)             | 200 | 32 |
| 406.02.13.3               | BT 40 | 2 – 13 (ER 20)             | 200 | 35 |
| 406.02.16.3               | BT 40 | 2 – 16 (ER 25)             | 200 | 42 |
| 406.02.20.3               | BT 40 | 2 – 20 (ER 32)             | 200 | 50 |
| 406.02.26.3               | BT 40 | 3 – 26 (ER 40)             | 200 | 63 |

W zestawie:  
Delivery:

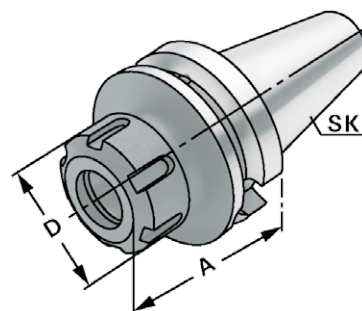
Wyważona nakrętka  
With balanced clamping nut





**Zastosowanie:**  
Do mocowania narzędzi z chwytem walcowym w tulejach zaciskowych ER.

**Application:**  
For mounting straight-shank tools in collets.



JIS B 6339 AD/B  $\uparrow \leq 0,003$  G6,3 15.000 min<sup>-1</sup> 14.04

| Kod produktu<br>Order no. | SK    | Zakres średnic<br>Capacity | A   | D  |
|---------------------------|-------|----------------------------|-----|----|
| 506.02.13                 | BT 50 | 2 - 13 (ER 20)             | 70  | 35 |
| 506.02.16                 | BT 50 | 2 - 16 (ER 25)             | 70  | 42 |
| 506.02.20                 | BT 50 | 2 - 20 (ER 32)             | 70  | 50 |
| 506.02.26                 | BT 50 | 3 - 26 (ER 40)             | 80  | 63 |
| 506.02.10.1               | BT 50 | 1 - 10 (ER 16)             | 100 | 32 |
| 506.02.13.1               | BT 50 | 2 - 13 (ER 20)             | 100 | 35 |
| 506.02.16.1               | BT 50 | 2 - 16 (ER 25)             | 100 | 42 |
| 506.02.20.1               | BT 50 | 2 - 20 (ER 32)             | 100 | 50 |
| 506.02.26.1               | BT 50 | 3 - 26 (ER 40)             | 100 | 63 |
| 506.02.10.2               | BT 50 | 1 - 10 (ER 16)             | 160 | 32 |
| 506.02.13.2               | BT 50 | 2 - 13 (ER 20)             | 160 | 35 |
| 506.02.16.2               | BT 50 | 2 - 16 (ER 25)             | 160 | 42 |
| 506.02.20.2               | BT 50 | 2 - 20 (ER 32)             | 160 | 50 |
| 506.02.26.2               | BT 50 | 3 - 26 (ER 40)             | 160 | 63 |
| 506.02.10.3               | BT 50 | 1 - 10 (ER 16)             | 200 | 32 |
| 506.02.13.3               | BT 50 | 2 - 13 (ER 20)             | 200 | 35 |
| 506.02.16.3               | BT 50 | 2 - 16 (ER 25)             | 200 | 42 |
| 506.02.20.3               | BT 50 | 2 - 20 (ER 32)             | 200 | 50 |
| 506.02.26.3               | BT 50 | 3 - 26 (ER 40)             | 200 | 63 |

**W zestawie:** Wyważona nakrętka  
**Delivery:** With balanced clamping nut



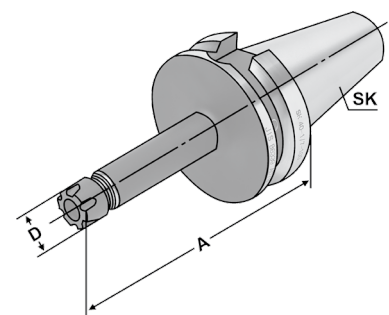


2



**Zastosowanie:**  
Do mocowania narzędzi z chwytem walcowym w tulejach zaciskowych ER.

**Application:**  
For mounting straight-shank tools in collets.



JIS B 6339



AD/B

$\nearrow \leq 0,003$

G2,5  
15.000 min<sup>-1</sup>



14.04

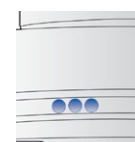
| Kod produktu<br>Order no. | SK    | Zakres średnic<br>Capacity | A   | D  |
|---------------------------|-------|----------------------------|-----|----|
| 305.02.07*                | BT 30 | 1 – 7 (ER 11)              | 70  | 16 |
| 305.02.07.1*              | BT 30 | 1 – 7 (ER 11)              | 100 | 16 |
| 305.02.07.10*             | BT 30 | 1 – 10 (ER 16)             | 70  | 22 |
| 305.02.07.10.1*           | BT 30 | 1 – 10 (ER 16)             | 100 | 22 |
| 406.02.07                 | BT 40 | 1 – 7 (ER 11)              | 55  | 16 |
| 406.02.07.1               | BT 40 | 1 – 7 (ER 11)              | 100 | 16 |
| 406.02.07.2               | BT 40 | 1 – 7 (ER 11)              | 160 | 16 |
| 406.02.07.10              | BT 40 | 1 – 10 (ER 16)             | 55  | 22 |
| 406.02.07.10.1            | BT 40 | 1 – 10 (ER 16)             | 100 | 22 |
| 406.02.07.10.2            | BT 40 | 1 – 10 (ER 16)             | 160 | 22 |

\* JIS B 6339 typ AD  
\* JIS B 6339 form AD

**W zestawie:** Wyważona nakrętka typu mini  
**Delivery:** With balanced clamping nut

### Wersja z wyważeniem

Balanced type



**Kod produktu**  
Order no.

**Rozmiar**  
Size

**Wyważenie w tolerancji G 2,5**  
Balancing at G 2.5

W25 **Bez raportu z wyważania**  
Without balancing report

W25.2 **Z raportem z wyważania**  
With balancing report

**Wyważenie niewyważonych narzędzi**  
Balancing of unbalanced tools

W25.1 **Bez raportu z wyważania**  
Without balancing report





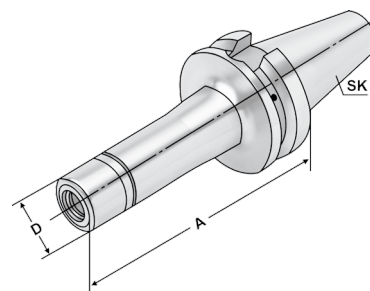


**Zastosowanie:**

Do mocowania narzędzi z chwytem prostym w tulejach zaciskowych. Do zastosowań w obszarze HSC i do bardzo precyzyjnej obróbki.

**Application:**

For mounting straight-shank tools in collets. To use for high speed cutting and high precision milling.

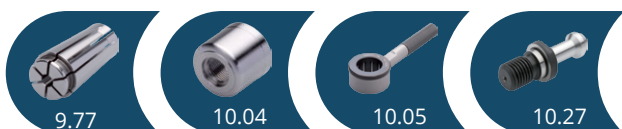


JIS B 6339 AD  $\sqrt{\leq 0,003}$  G2,5 30.000 min<sup>-1</sup> 14.04

| Kod produktu<br>Order no. | SK    | Zakres średnic<br>Capacity | A   | D    |
|---------------------------|-------|----------------------------|-----|------|
| 305.03.10                 | BT 30 | 1 - 10 (KPS 10)            | 60  | 27,5 |
| 305.03.16                 | BT 30 | 4 - 16 (KPS 16)            | 60  | 40   |
| 305.03.10.1               | BT 30 | 1 - 10 (KPS 10)            | 90  | 27,5 |
| 305.03.16.1               | BT 30 | 4 - 16 (KPS 16)            | 90  | 40   |
| 405.03.10                 | BT 40 | 1 - 10 (KPS 10)            | 60  | 27,5 |
| 405.03.16                 | BT 40 | 4 - 16 (KPS 16)            | 60  | 40   |
| 405.03.10.1               | BT 40 | 1 - 10 (KPS 10)            | 90  | 27,5 |
| 405.03.16.1               | BT 40 | 4 - 16 (KPS 16)            | 90  | 40   |
| 405.03.10.2               | BT 40 | 1 - 10 (KPS 10)            | 120 | 27,5 |
| 405.03.16.2               | BT 40 | 4 - 16 (KPS 16)            | 120 | 40   |
| 405.03.10.3               | BT 40 | 1 - 10 (KPS 10)            | 160 | 27,5 |
| 405.03.16.3               | BT 40 | 4 - 16 (KPS 16)            | 160 | 40   |
| 505.03.10                 | BT 50 | 1 - 10 (KPS 10)            | 105 | 27,5 |
| 505.03.16                 | BT 50 | 4 - 16 (KPS 16)            | 105 | 40   |
| 505.03.10.1               | BT 50 | 1 - 10 (KPS 10)            | 135 | 27,5 |
| 505.03.16.1               | BT 50 | 4 - 16 (KPS 16)            | 135 | 40   |
| 505.03.10.2               | BT 50 | 1 - 10 (KPS 10)            | 165 | 27,5 |
| 505.03.16.2               | BT 50 | 4 - 16 (KPS 16)            | 165 | 40   |

W zestawie:  
Delivery:

Wyważona nakrętka  
With balanced clamping nut





2

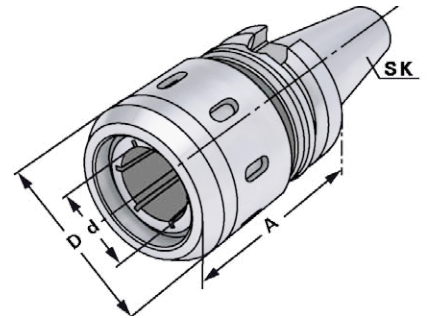


### Zastosowanie:

Do mocowania narzędzi z chwytem walcowym wg DIN 1835 forma A + B + E i DIN 6535 forma HB + HE.

### Application:

For mounting straight-shank tools acc. DIN 1835 form A+B+E and DIN 6535 form HB+HE.



JIS B 6339



AD/B

$\nearrow \leq 0,003$

G2,5  
15.000 min<sup>-1</sup>



14.04

| Kod produktu<br>Order no. | SK    | Zakres średnic<br>Capacity | A  | D  | d  |
|---------------------------|-------|----------------------------|----|----|----|
| 406.64.20                 | BT 40 | 20 (HKS 20)                | 90 | 53 | 20 |
| 406.64.25                 | BT 40 | 25 (HKS 25)                | 90 | 63 | 25 |
| 406.64.32                 | BT 40 | 32 (HKS 32)                | 90 | 68 | 32 |
| 506.64.20                 | BT 50 | 20 (HKS 20)                | 95 | 53 | 20 |
| 506.64.25                 | BT 50 | 25 (HKS 25)                | 95 | 63 | 25 |
| 506.64.32                 | BT 50 | 32 (HKS 32)                | 90 | 68 | 32 |





End mill holders DIN 6359 for end mills DIN 1835-B

2

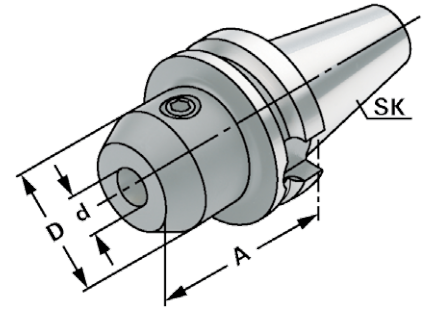


**Zastosowanie:**

Do mocowania narzędzi z chwytem walcowym Weldon DIN1835-B.

**Application:**

For mounting straight-shank tools with lateral flat according to DIN 1835 form B (Weldon).



JIS B 6339



AD

$\nearrow \leq 0,003$

G2,5  
15.000 min<sup>-1</sup>



14.04

| Kod produktu<br>Order no. | SK    | dH4 | A   | D  |
|---------------------------|-------|-----|-----|----|
| 305.04.06                 | BT 30 | 6   | 50  | 25 |
| 305.04.08                 | BT 30 | 8   | 50  | 28 |
| 305.04.10                 | BT 30 | 10  | 50  | 35 |
| 305.04.12                 | BT 30 | 12  | 50  | 42 |
| 305.04.14                 | BT 30 | 14  | 50  | 44 |
| 305.04.16                 | BT 30 | 16  | 63  | 48 |
| 305.04.18                 | BT 30 | 18  | 63  | 50 |
| 305.04.20                 | BT 30 | 20  | 63  | 52 |
|                           |       |     |     |    |
| 405.04.06                 | BT 40 | 6   | 50  | 25 |
| 405.04.08                 | BT 40 | 8   | 50  | 28 |
| 405.04.10                 | BT 40 | 10  | 63  | 35 |
| 405.04.12                 | BT 40 | 12  | 63  | 42 |
| 405.04.14                 | BT 40 | 14  | 63  | 44 |
| 405.04.16                 | BT 40 | 16  | 63  | 48 |
| 405.04.18                 | BT 40 | 18  | 63  | 50 |
| 405.04.20                 | BT 40 | 20  | 63  | 52 |
| 405.04.25                 | BT 40 | 25  | 90  | 65 |
| 405.04.32                 | BT 40 | 32  | 100 | 72 |
|                           |       |     |     |    |
| 405.04.06.1               | BT 40 | 6   | 100 | 25 |
| 405.04.08.1               | BT 40 | 8   | 100 | 28 |
| 405.04.10.1               | BT 40 | 10  | 100 | 35 |
| 405.04.12.1               | BT 40 | 12  | 100 | 42 |
| 405.04.14.1               | BT 40 | 14  | 100 | 44 |
| 405.04.16.1               | BT 40 | 16  | 100 | 48 |
| 405.04.18.1               | BT 40 | 18  | 100 | 50 |
| 405.04.20.1               | BT 40 | 20  | 100 | 52 |

**Uwaga:**  
**Note:**

Od d=25 mocowanie narzędzia dwoma śrubami  
From d = 25 on two clamping screws

**W zestawie:**  
**Delivery:**

Śruba mocująca  
With clamping screw



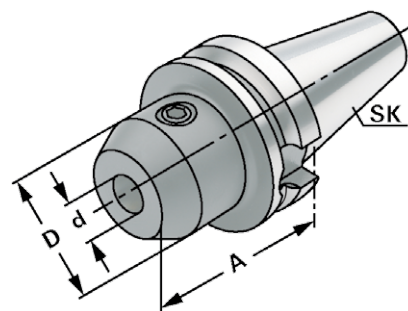


End mill holders DIN 6359 for end mills DIN 1835-B



**Zastosowanie:**  
Do mocowania narzędzi z chwytem walcowym Weldon DIN1835-B.

**Application:**  
For mounting straight-shank tools with lateral flat according to DIN 1835 form B (Weldon).



2

JIS B 6339



AD/B

$\nearrow \leq 0,003$

G6,3  
15.000 min<sup>-1</sup>



14.04

**Kod produktu**

Order no.

| Order no.   | SK    | d <sup>H4</sup> | A   | D  |
|-------------|-------|-----------------|-----|----|
| 406.04.16.0 | BT 40 | 16              | 35  | 45 |
| 406.04.20.0 | BT 40 | 20              | 35  | 45 |
| 406.04.25.0 | BT 40 | 25              | 35  | 55 |
| 406.04.32.0 | BT 40 | 32              | 65  | 50 |
| 406.04.06   | BT 40 | 6               | 50  | 25 |
| 406.04.08   | BT 40 | 8               | 50  | 28 |
| 406.04.10   | BT 40 | 10              | 63  | 35 |
| 406.04.12   | BT 40 | 12              | 63  | 42 |
| 406.04.14   | BT 40 | 14              | 63  | 44 |
| 406.04.16   | BT 40 | 16              | 63  | 48 |
| 406.04.18   | BT 40 | 18              | 63  | 50 |
| 406.04.20   | BT 40 | 20              | 63  | 52 |
| 406.04.25   | BT 40 | 25              | 90  | 65 |
| 406.04.32   | BT 40 | 32              | 100 | 72 |
| 406.04.40   | BT 40 | 40              | 120 | 80 |
| 406.04.06.1 | BT 40 | 6               | 100 | 25 |
| 406.04.08.1 | BT 40 | 8               | 100 | 28 |
| 406.04.10.1 | BT 40 | 10              | 100 | 35 |
| 406.04.12.1 | BT 40 | 12              | 100 | 42 |
| 406.04.14.1 | BT 40 | 14              | 100 | 44 |
| 406.04.16.1 | BT 40 | 16              | 100 | 48 |
| 406.04.18.1 | BT 40 | 18              | 100 | 50 |
| 406.04.20.1 | BT 40 | 20              | 100 | 52 |
| 406.04.06.2 | BT 40 | 6               | 160 | 25 |
| 406.04.08.2 | BT 40 | 8               | 160 | 28 |
| 406.04.10.2 | BT 40 | 10              | 160 | 35 |
| 406.04.12.2 | BT 40 | 12              | 160 | 42 |
| 406.04.14.2 | BT 40 | 14              | 160 | 44 |
| 406.04.16.2 | BT 40 | 16              | 160 | 48 |
| 406.04.18.2 | BT 40 | 18              | 160 | 50 |
| 406.04.20.2 | BT 40 | 20              | 160 | 52 |
| 406.04.25.2 | BT 40 | 25              | 160 | 65 |
| 406.04.32.2 | BT 40 | 32              | 160 | 72 |
| 406.04.40.2 | BT 40 | 40              | 160 | 80 |



# Oprawki zaciskowe DIN 6359 do narzędzi z chwytem walcowym Weldon'a DIN 1835-B

JIS B 6339  
(MAS 403 BT)

End mill holders DIN 6359 for end mills DIN 1835-B

2

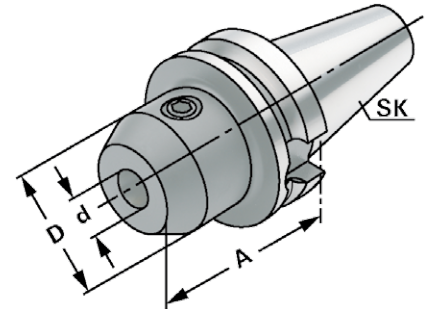


**Zastosowanie:**

Do mocowania narzędzi z chwytem walcowym Weldon DIN1835-B.

**Application:**

For mounting straight-shank tools with lateral flat according to DIN 1835 form B (Weldon).



JIS B 6339



AD/B

$\nearrow \leq 0,003$

G6,3  
15.000 min<sup>-1</sup>



13.04

**Kod produktu**

Order no.

| Order no.   | SK    | dH4 | A   | D  |
|-------------|-------|-----|-----|----|
| 506.04.06   | BT 50 | 6   | 63  | 25 |
| 506.04.08   | BT 50 | 8   | 63  | 28 |
| 506.04.10   | BT 50 | 10  | 63  | 35 |
| 506.04.12   | BT 50 | 12  | 80  | 42 |
| 506.04.14   | BT 50 | 14  | 80  | 44 |
| 506.04.16   | BT 50 | 16  | 80  | 48 |
| 506.04.18   | BT 50 | 18  | 80  | 50 |
| 506.04.20   | BT 50 | 20  | 80  | 52 |
| 506.04.25   | BT 50 | 25  | 100 | 65 |
| 506.04.32   | BT 50 | 32  | 105 | 72 |
| 506.04.40   | BT 50 | 40  | 110 | 80 |
|             |       |     |     |    |
| 506.04.06.1 | BT 50 | 6   | 100 | 25 |
| 506.04.08.1 | BT 50 | 8   | 100 | 28 |
| 506.04.10.1 | BT 50 | 10  | 100 | 35 |
| 506.04.12.1 | BT 50 | 12  | 100 | 42 |
| 506.04.14.1 | BT 50 | 14  | 100 | 44 |
| 506.04.16.1 | BT 50 | 16  | 100 | 48 |
| 506.04.18.1 | BT 50 | 18  | 100 | 50 |
| 506.04.20.1 | BT 50 | 20  | 100 | 52 |
|             |       |     |     |    |
| 506.04.06.2 | BT 50 | 6   | 160 | 25 |
| 506.04.08.2 | BT 50 | 8   | 160 | 28 |
| 506.04.10.2 | BT 50 | 10  | 160 | 35 |
| 506.04.12.2 | BT 50 | 12  | 160 | 42 |
| 506.04.14.2 | BT 50 | 14  | 160 | 44 |
| 506.04.16.2 | BT 50 | 16  | 160 | 48 |
| 506.04.18.2 | BT 50 | 18  | 160 | 50 |
| 506.04.20.2 | BT 50 | 20  | 160 | 52 |
| 506.04.25.2 | BT 50 | 25  | 160 | 65 |
| 506.04.32.2 | BT 50 | 32  | 160 | 72 |
| 506.04.40.2 | BT 50 | 40  | 160 | 80 |

**Uwaga:**

**Note:**

**W zestawie:**

**Delivery:**

Od d=25 mocowanie narzędzia dwoma śrubami

From d = 25 on two clamping screws

Śruba mocująca

With clamping screw



10.52



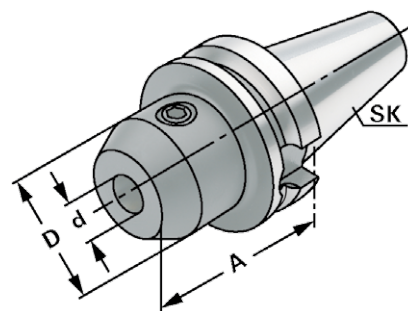
10.27



End mill holders DIN 6359 for end mills DIN 1835-B



**Zastosowanie:**  
Do mocowania narzędzi z chwytem walcowym Weldon DIN1835-B.  
**Application:**  
For mounting straight-shank tools with lateral flat according to DIN 1835 form B (Weldon).



2

JIS B 6339



AD/B

$\nearrow \leq 0,003$

G6,3  
15.000 min<sup>-1</sup>



13.04

**Kod produktu**

| Order no.   | SK    | d <sup>H4</sup> | A   | D  |
|-------------|-------|-----------------|-----|----|
| 506.04.06.3 | BT 50 | 6               | 200 | 25 |
| 506.04.08.3 | BT 50 | 8               | 200 | 28 |
| 506.04.10.3 | BT 50 | 10              | 200 | 35 |
| 506.04.12.3 | BT 50 | 12              | 200 | 42 |
| 506.04.14.3 | BT 50 | 14              | 200 | 44 |
| 506.04.16.3 | BT 50 | 16              | 200 | 48 |
| 506.04.18.3 | BT 50 | 18              | 200 | 50 |
| 506.04.20.3 | BT 50 | 20              | 200 | 52 |
| 506.04.25.3 | BT 50 | 25              | 200 | 65 |
| 506.04.32.3 | BT 50 | 32              | 200 | 72 |
| 506.04.40.3 | BT 50 | 40              | 200 | 80 |

**Uwaga:** Od d=25 mocowanie narzędzia dwoma śrubami  
**Note:** From d = 25 on two clamping screws

**W zestawie:** Śruba mocująca  
**Delivery:** With clamping screw





End mill holders DIN 6359 with coolant channels for end mills DIN 1835-B

2

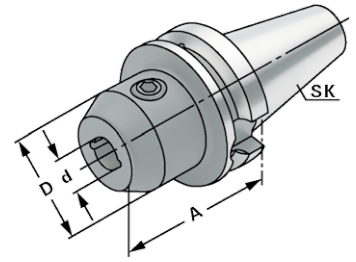


**Zastosowanie:**

Do mocowania narzędzi z chwytem walcowym Weldon DIN1835-B. Z kanałkami chłodzącymi dla optymalnego chłodzenia ostrza narzędzia.

**Application:**

For mounting straight-shank tools with lateral flat according to DIN 1835 form B (Weldon). With coolant channels for optimal coolant at the cutting edge.



JIS B 6339



AD/B

$\uparrow \leq 0,003$

G6,3  
15.000 min<sup>-1</sup>



13.04

**Kod produktu**

Order no.

| Order no.     | SK    | d <sup>H4</sup> | A   | D  |
|---------------|-------|-----------------|-----|----|
| 406.04.06.K   | BT 40 | 6               | 50  | 25 |
| 406.04.08.K   | BT 40 | 8               | 50  | 28 |
| 406.04.10.K   | BT 40 | 10              | 63  | 35 |
| 406.04.12.K   | BT 40 | 12              | 63  | 42 |
| 406.04.14.K   | BT 40 | 14              | 63  | 44 |
| 406.04.16.K   | BT 40 | 16              | 63  | 48 |
| 406.04.18.K   | BT 40 | 18              | 63  | 50 |
| 406.04.20.K   | BT 40 | 20              | 63  | 52 |
| 406.04.25.K   | BT 40 | 25              | 90  | 65 |
| 406.04.32.K   | BT 40 | 32              | 100 | 72 |
| 406.04.40.K   | BT 40 | 40              | 120 | 80 |
|               |       |                 |     |    |
| 406.04.06.1.K | BT 40 | 6               | 100 | 25 |
| 406.04.08.1.K | BT 40 | 8               | 100 | 28 |
| 406.04.10.1.K | BT 40 | 10              | 100 | 35 |
| 406.04.12.1.K | BT 40 | 12              | 100 | 42 |
| 406.04.14.1.K | BT 40 | 14              | 100 | 44 |
| 406.04.16.1.K | BT 40 | 16              | 100 | 48 |
| 406.04.18.1.K | BT 40 | 18              | 100 | 50 |
| 406.04.20.1.K | BT 40 | 20              | 100 | 52 |

**Uwaga:**

Od d = 25 z dwoma śrubami mocującymi  
d = 6 do 18 z dwoma kanałkami chłodzącymi  
d = 20 do 40 z czterema kanałkami chłodzącymi

W przypadku narzędzi z wewnętrznym doprowadzaniem chłodziwa należy użyć pierścienia uszczelniającego typu O-ring.

**Note:**

From d = 25 on two clamping screws  
d = 6 to 18 with two coolant channels  
d = 20 to 40 with four coolant channels  
For tools with through coolant an O-ring must be used.

**W zestawie:**

**Delivery:**

Śruba mocującą z O-ringiem  
With clamping screw and O-ring





End mill holders DIN 6359 with coolant channels for end mills DIN 1835-B

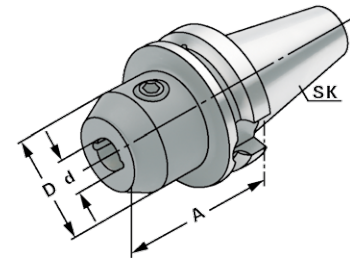


**Zastosowanie:**

Do mocowania narzędzi z chwytem walcowym Weldon DIN1835-B. Z kanałkami chłodzącymi dla optymalnego chłodzenia ostrza narzędzia.

**Application:**

For mounting straight-shank tools with lateral flat according to DIN 1835 form B (Weldon). With coolant channels for optimal coolant at the cutting edge.



JIS B 6339 AD/B  $\uparrow \leq 0,003$  G6,3 15.000 min<sup>-1</sup>

13.04

| Kod produktu<br>Order no. | SK    | d <sup>H4</sup> | A   | D  |
|---------------------------|-------|-----------------|-----|----|
| 506.04.06.K               | BT 50 | 6               | 63  | 25 |
| 506.04.08.K               | BT 50 | 8               | 63  | 28 |
| 506.04.10.K               | BT 50 | 10              | 63  | 35 |
| 506.04.12.K               | BT 50 | 12              | 80  | 42 |
| 506.04.14.K               | BT 50 | 14              | 80  | 44 |
| 506.04.16.K               | BT 50 | 16              | 80  | 48 |
| 506.04.18.K               | BT 50 | 18              | 80  | 50 |
| 506.04.20.K               | BT 50 | 20              | 80  | 52 |
| 506.04.25.K               | BT 50 | 25              | 100 | 65 |
| 506.04.32.K               | BT 50 | 32              | 105 | 72 |
| 506.04.40.K               | BT 50 | 40              | 110 | 80 |

**Uwaga:** Od d = 25 z dwoma śrubami mocującymi  
 d = 6 do 18 z dwoma kanałkami chłodzącymi  
 d = 20 do 40 z czterema kanałkami chłodzącymi  
 W przypadku narzędzi z wewnętrznym doprowadzaniem chłodziwa należy użyć pierścienia uszczelniającego typu O-ring.

**Note:** From d = 25 on two clamping screws  
 d = 6 to 18 with two coolant channels  
 d = 20 to 40 with four coolant channels  
 For tools with through coolant an O-ring must be used.

**W zestawie:** Śruba mocującą z O-ringiem  
**Delivery:** With clamping screw and O-ring







End mill holders DIN 6359 for end mills DIN 1835-E

2

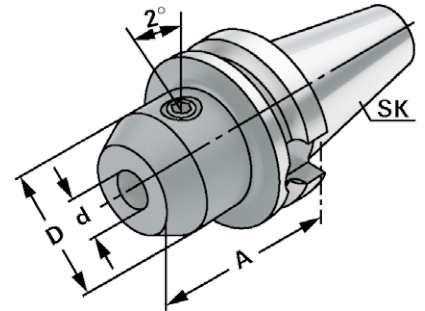


**Zastosowanie:**

Do mocowania do narzędzi z chwytem walcowym ze spłaszczeniem klinowym DIN 1835-E.

**Application:**

For mounting straight-shank tools and inclined flat according to DIN 1835 form E (Whistle Notch). Whistle Notch).



JIS B 6339



AD/B

$\nearrow \leq 0,003$

G6,3  
15.000 min<sup>-1</sup>



14.04

**Kod produktu**

Order no.

| Order no. | SK    | d <sup>H4</sup> | A   | D  |
|-----------|-------|-----------------|-----|----|
| 406.05.06 | BT 40 | 6               | 50  | 25 |
| 406.05.08 | BT 40 | 8               | 50  | 28 |
| 406.05.10 | BT 40 | 10              | 63  | 35 |
| 406.05.12 | BT 40 | 12              | 63  | 42 |
| 406.05.14 | BT 40 | 14              | 63  | 44 |
| 406.05.16 | BT 40 | 16              | 63  | 48 |
| 406.05.18 | BT 40 | 18              | 63  | 50 |
| 406.05.20 | BT 40 | 20              | 63  | 52 |
| 406.05.25 | BT 40 | 25              | 90  | 65 |
| 406.05.32 | BT 40 | 32              | 100 | 72 |
| 406.05.40 | BT 40 | 40              | 120 | 80 |
|           |       |                 |     |    |
| 506.05.06 | BT 50 | 6               | 63  | 25 |
| 506.05.08 | BT 50 | 8               | 63  | 28 |
| 506.05.10 | BT 50 | 10              | 63  | 35 |
| 506.05.12 | BT 50 | 12              | 80  | 42 |
| 506.05.14 | BT 50 | 14              | 80  | 44 |
| 506.05.16 | BT 50 | 16              | 80  | 48 |
| 506.05.18 | BT 50 | 18              | 80  | 50 |
| 506.05.20 | BT 50 | 20              | 80  | 52 |
| 506.05.25 | BT 50 | 25              | 100 | 65 |
| 506.05.32 | BT 50 | 32              | 105 | 72 |
| 506.05.40 | BT 50 | 40              | 110 | 80 |

**Uwaga:**

**Note:**

Od d = 25 z dwoma śrubami mocującymi

From d = 25 on two clamping screws

**W zestawie:**

**Delivery:**

Śruba mocująca i śruba do regulacji osiowej

With clamping screw and axial adjustment bolt

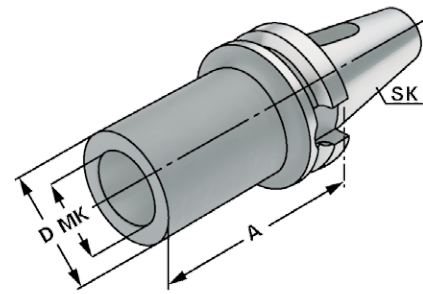


**Zastosowanie:**

Tuleja redukcyjna do narzędzi z chwytem Morse'a z płetwą wg DIN 228-B.

**Application:**

For mounting tools with Morse taper shank and tang according to DIN 228-1 form B.



2

JIS B 6339



AD/B

 $\nearrow \leq 0,003$ 
 $G6,3$   
 $15.000 \text{ min}^{-1}$ 

| Kod produktu<br>Order no. | SK    | MK<br>MT | A   | D  |
|---------------------------|-------|----------|-----|----|
| 305.07.01 *               | BT 30 | 1        | 45  | 25 |
| 305.07.02 *               | BT 30 | 2        | 60  | 32 |
| 305.07.03 *               | BT 30 | 3        | 75  | 40 |
| 405.07.01 *               | BT 40 | 1        | 50  | 25 |
| 405.07.02 *               | BT 40 | 2        | 50  | 32 |
| 405.07.03 *               | BT 40 | 3        | 70  | 40 |
| 405.07.04 *               | BT 40 | 4        | 95  | 48 |
| 406.07.01                 | BT 40 | 1        | 50  | 25 |
| 406.07.02                 | BT 40 | 2        | 50  | 32 |
| 406.07.03                 | BT 40 | 3        | 70  | 40 |
| 406.07.04                 | BT 40 | 4        | 95  | 48 |
| 506.07.01                 | BT 50 | 1        | 45  | 25 |
| 506.07.02                 | BT 50 | 2        | 60  | 32 |
| 506.07.03                 | BT 50 | 3        | 65  | 40 |
| 506.07.04                 | BT 50 | 4        | 95  | 48 |
| 506.07.05                 | BT 50 | 5        | 105 | 63 |

\* JIS B 6339 typ AD

\* JIS B 6339 form AD





2

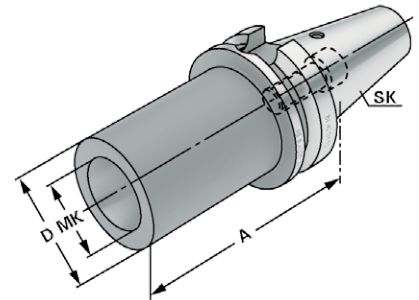


**Zastosowanie:**

Tuleja redukcyjna do narzędzi z chwytem Morse'a z gwintem wg DIN 228-A.

**Application:**

For clamping tools with Morse taper shank and thread according to DIN 228-1 form A.



JIS B 6339

Typ A

$\nabla \leq 0,003$

G6,3  
15.000 min<sup>-1</sup>

| Kod produktu<br>Order no. | SK    | MK<br>MT | M   | A   | D  |
|---------------------------|-------|----------|-----|-----|----|
| 405.08.01                 | BT 40 | 1        | M6  | 50  | 25 |
| 405.08.02                 | BT 40 | 2        | M10 | 50  | 32 |
| 405.08.03                 | BT 40 | 3        | M12 | 70  | 40 |
| 405.08.04                 | BT 40 | 4        | M16 | 95  | 48 |
| 405.08.04A*               | BT 40 | 4        | M16 | 110 | 63 |
| 505.08.01                 | BT 50 | 1        | M6  | 45  | 25 |
| 505.08.02                 | BT 50 | 2        | M10 | 60  | 32 |
| 505.08.03                 | BT 50 | 3        | M12 | 65  | 40 |
| 505.08.04                 | BT 50 | 4        | M16 | 70  | 48 |
| 505.08.04A*               | BT 50 | 4        | M16 | 85  | 63 |
| 505.08.05                 | BT 50 | 5        | M20 | 100 | 63 |
| 505.08.05A*               | BT 50 | 5        | M20 | 118 | 78 |

\* Z wgłębieniem wg DIN 2201

\* With drive flats according to DIN 2201

**W zestawie:** Wbudowana śruba napinająca

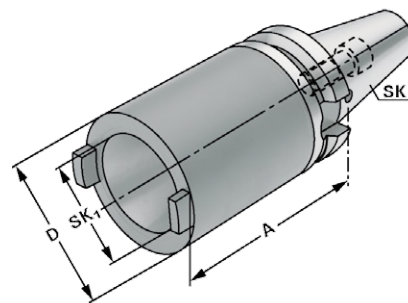
**Delivery:** With built-in tightening bolt





**Zastosowanie:**  
Do mocowania stożków zgodnych z DIN 69871, JIS B 6339 i DIN 2080.

**Application:**  
For mounting tapers according to DIN 69871, JIS B 6339 and DIN 2080.



2

JIS B 6339

Typ A

$\nearrow \leq 0,003$

G6,3  
15.000 min<sup>-1</sup>

### Kod produktu

Order no.

SK

SK<sub>1</sub>

A

D

405.09.30

BT 40

SK 30

60

63

405.09.40

BT 40

SK 40

100

63

505.09.40

BT 50

SK 40

70

70

505.09.50

BT 50

SK 50

120

97

**Uwaga:** W zestawie z wbudowaną śrubą do krótkich narzędzi stożkowych. Dodatkowa śruba do narzędzi DIN 2080.

**Note:** Delivered with a built-in screw for shortened taper tools. Additional screw for DIN 2080 tools included.





Combi shell mill holders DIN 6358

2

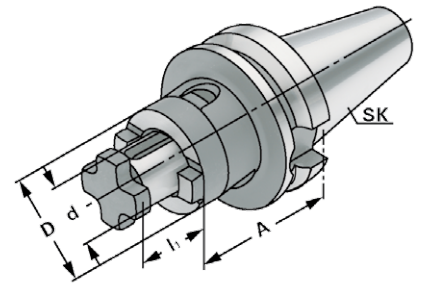


**Zastosowanie:**

Do mocowania frezów tarczowych oraz głowic frezarskich.

**Application:**

For mounting milling cutters with transverse or longitudinal groove.



JIS B 6339



AD/B

$\nabla \leq 0,005$

G6,3  
15.000 min<sup>-1</sup>

**Kod produktu**

Order no.

| Order no.   | SK    | d <sub>h6</sub> | A   | l <sub>1</sub> | D  |
|-------------|-------|-----------------|-----|----------------|----|
| 305.10.16 * | BT 30 | 16              | 45  | 17             | 32 |
| 305.10.22 * | BT 30 | 22              | 47  | 19             | 40 |
| 305.10.27 * | BT 30 | 27              | 49  | 21             | 48 |
| 406.10.16   | BT 40 | 16              | 55  | 17             | 32 |
| 406.10.22   | BT 40 | 22              | 55  | 19             | 40 |
| 406.10.27   | BT 40 | 27              | 55  | 21             | 48 |
| 406.10.32   | BT 40 | 32              | 60  | 24             | 58 |
| 406.10.40   | BT 40 | 40              | 60  | 27             | 70 |
| 406.10.16.1 | BT 40 | 16              | 100 | 17             | 32 |
| 406.10.22.1 | BT 40 | 22              | 100 | 19             | 40 |
| 406.10.27.1 | BT 40 | 27              | 100 | 21             | 48 |
| 406.10.32.1 | BT 40 | 32              | 100 | 24             | 58 |
| 406.10.40.1 | BT 40 | 40              | 100 | 27             | 70 |
| 406.10.16.2 | BT 40 | 16              | 160 | 17             | 32 |
| 406.10.22.2 | BT 40 | 22              | 160 | 19             | 40 |
| 406.10.27.2 | BT 40 | 27              | 160 | 21             | 48 |
| 406.10.32.2 | BT 40 | 32              | 160 | 24             | 58 |
| 406.10.40.2 | BT 40 | 40              | 160 | 27             | 70 |

\* DIN 69871 typ AD  
\* DIN 69871 form AD

**W zestawie:**

Ze śrubą blokującą, pierścieniem zbierakowym i wypustem pasowanym

**Delivery:**

With retaining screw, driving ring and feather key



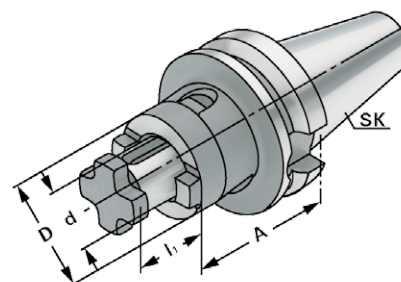


Combi shell mill holders DIN 6358



**Zastosowanie:**  
Do mocowania frezów tarczowych oraz głowic frezarskich.

**Application:**  
For mounting milling cutters with transverse or longitudinal groove.



JIS B 6339  AD/B   $\uparrow \leq 0,005$   G6,3 15.000 min<sup>-1</sup>

| Kod produktu |       |                 |     |                |    |
|--------------|-------|-----------------|-----|----------------|----|
| Order no.    | SK    | d <sub>h6</sub> | A   | l <sub>1</sub> | D  |
| 506.10.16    | BT 50 | 16              | 70  | 17             | 32 |
| 506.10.22    | BT 50 | 22              | 70  | 19             | 40 |
| 506.10.27    | BT 50 | 27              | 70  | 21             | 48 |
| 506.10.32    | BT 50 | 32              | 70  | 24             | 58 |
| 506.10.40    | BT 50 | 40              | 70  | 27             | 70 |
|              |       |                 |     |                |    |
| 506.10.16.2  | BT 50 | 16              | 160 | 17             | 32 |
| 506.10.22.2  | BT 50 | 22              | 160 | 19             | 40 |
| 506.10.27.2  | BT 50 | 27              | 160 | 21             | 48 |
| 506.10.32.2  | BT 50 | 32              | 160 | 24             | 58 |
| 506.10.40.2  | BT 50 | 40              | 160 | 27             | 70 |

**W zestawie:** Ze śrubą blokującą, pierścieniem zbierakowym i wypustem pasowanym

**Delivery:** With retaining screw, driving ring and feather key





Shell mill holders DIN 6357 with enlarged contact face and coolant exit bores on the end face

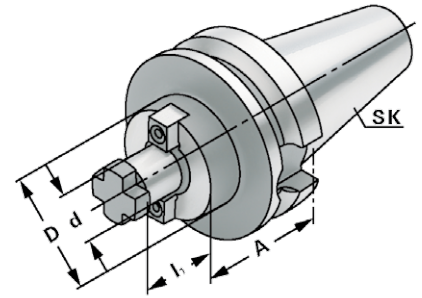
2

**Zastosowanie:**

Do mocowania głowic i frezów z rowkiem zabierakowym wg DIN 138.

**Application:**

For mounting milling cutters with transversal groove.



JIS B 6339



AD/B

 $\nearrow \leq 0,005$ G6,3  
15.000 min<sup>-1</sup>**Kod produktu**

Order no.

| Order no.   | SK    | $d_{h6}$ | A   | $l_1$ | D  |
|-------------|-------|----------|-----|-------|----|
| 305.11.16 * | BT 30 | 16       | 40  | 17    | 38 |
| 305.11.22 * | BT 30 | 22       | 40  | 19    | 48 |
| 305.11.27 * | BT 30 | 27       | 40  | 21    | 58 |
| 305.11.32 * | BT 30 | 32       | 50  | 24    | 78 |
| 405.11.16 * | BT 40 | 16       | 40  | 17    | 38 |
| 405.11.22 * | BT 40 | 22       | 40  | 19    | 48 |
| 405.11.27 * | BT 40 | 27       | 40  | 21    | 58 |
| 405.11.32 * | BT 40 | 32       | 50  | 24    | 78 |
| 405.11.40 * | BT 40 | 40       | 50  | 27    | 88 |
| 406.11.16   | BT 40 | 16       | 40  | 17    | 38 |
| 406.11.22   | BT 40 | 22       | 40  | 19    | 48 |
| 406.11.27   | BT 40 | 27       | 40  | 21    | 58 |
| 406.11.32   | BT 40 | 32       | 50  | 24    | 78 |
| 406.11.40   | BT 40 | 40       | 50  | 27    | 88 |
| 406.11.16.1 | BT 40 | 16       | 100 | 17    | 38 |
| 406.11.22.1 | BT 40 | 22       | 100 | 19    | 48 |
| 406.11.27.1 | BT 40 | 27       | 100 | 21    | 58 |
| 406.11.32.1 | BT 40 | 32       | 100 | 24    | 78 |
| 406.11.40.1 | BT 40 | 40       | 100 | 27    | 88 |
| 406.11.16.2 | BT 40 | 16       | 160 | 17    | 38 |
| 406.11.22.2 | BT 40 | 22       | 160 | 19    | 48 |
| 406.11.27.2 | BT 40 | 27       | 160 | 21    | 58 |
| 406.11.32.2 | BT 40 | 32       | 160 | 24    | 78 |
| 406.11.40.2 | BT 40 | 40       | 160 | 27    | 88 |

\* JIS B 6339 typ AD  
\* JIS B 6339 form AD

BT 30 bez otworów wylotowych chłodziwa na powierzchni czołowej  
BT 30 without coolant exit bores on the end face



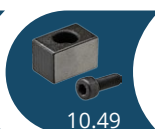
10.50



10.48



10.49



10.49



10.27



Shell mill holders DIN 6357 with enlarged contact face and coolant exit bores on the end face

(MAS 403 BT)

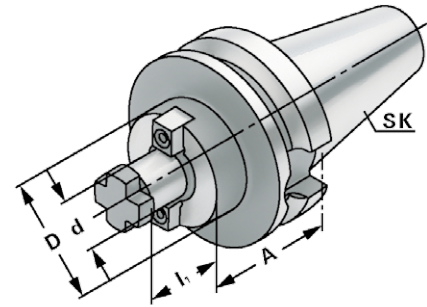


**Zastosowanie:**

Do mocowania głowic i frezów z rowkiem zabierakowym wg DIN 138.

**Application:**

For mounting milling cutters with transversal groove.



JIS B 6339  AD/B   $\uparrow \leq 0,005$   G6,3 15.000 min<sup>-1</sup>

| Kod produktu |       |                 |     |                |     |  |
|--------------|-------|-----------------|-----|----------------|-----|--|
| Order no.    | SK    | d <sub>h6</sub> | A   | l <sub>1</sub> | D   |  |
| 506.11.22    | BT 50 | 22              | 40  | 19             | 48  |  |
| 506.11.27    | BT 50 | 27              | 40  | 21             | 58  |  |
| 506.11.32    | BT 50 | 32              | 50  | 24             | 78  |  |
| 506.11.40    | BT 50 | 40              | 50  | 27             | 88  |  |
| 506.11.60    | BT 50 | 60              | 80  | 40             | 129 |  |
|              |       |                 |     |                |     |  |
| 506.11.22.1  | BT 50 | 22              | 100 | 19             | 48  |  |
| 506.11.27.1  | BT 50 | 27              | 100 | 21             | 58  |  |
| 506.11.32.1  | BT 50 | 32              | 100 | 24             | 78  |  |
| 506.11.40.1  | BT 50 | 40              | 100 | 27             | 88  |  |
|              |       |                 |     |                |     |  |
| 506.11.22.2  | BT 50 | 22              | 160 | 19             | 48  |  |
| 506.11.27.2  | BT 50 | 27              | 160 | 21             | 58  |  |
| 506.11.32.2  | BT 50 | 32              | 160 | 24             | 78  |  |
| 506.11.40.2  | BT 50 | 40              | 160 | 27             | 88  |  |

**d = 40/d = 60:** Do dużych głowic czołowych z czterema dodatkowymi otworami gwintowanymi zgodnie z DIN 2079.  
For large diameter face mill cutters with four additional threaded holes according to DIN 2079.

**W zestawie:** Ze zabierakami i śrubą mocującą krzyżakową. Dla d = 60 tylko z czterema śrubami mocującymi zgodnie z DIN 912.

**Delivery:** With drivers, cross head retaining screw and cylinder head retaining screw for cutters with central coolant.  
For d = 60 only with four fixation screws according to DIN 912.







2

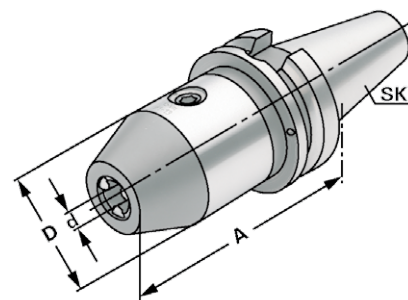


**Zastosowanie:**

Do mocowania narzędzi z uchwytem prostym.

**Application:**

For mounting tools with straight shanks.



JIS B 6339



AD

$\nearrow \leq 0,030$

G6,3  
15.000 min<sup>-1</sup>



14.04

| Kod produktu<br>Order no. | SK    | Zakres średnic<br>Capacity<br>d | A   | D  |
|---------------------------|-------|---------------------------------|-----|----|
| 305.15.08                 | BT 30 | 0 – 8                           | 73  | 36 |
| 305.15.13                 | BT 30 | 1,0 – 13                        | 93  | 50 |
| 305.15.16                 | BT 30 | 2,5 – 16                        | 98  | 50 |
| 405.15.08                 | BT 40 | 0 – 8                           | 78  | 36 |
| 405.15.13                 | BT 40 | 1,0 – 13                        | 98  | 50 |
| 405.15.16                 | BT 40 | 2,5 – 16                        | 103 | 50 |
| 505.15.13                 | BT 50 | 1,0 – 13                        | 111 | 50 |
| 505.15.16                 | BT 50 | 2,5 – 16                        | 113 | 50 |

**Uwaga:** Wysoka precyzja i dokładna współśrodkowość  $\leq 0,03$  mm. Pewny chwyt narzędzia dzięki mechanicznemu wzmocnieniu siły mocowania. Brak automatycznego zmniejszania siły mocowania podczas obróbki z obrotem w prawo, w lewo lub przy zatrzymaniu wrzeciona. Mocowanie i zwalnianie odbywa się za pomocą klucza imbusowego.

**Note:** High precision and accurate concentricity of  $\leq 0.03$  mm. Secure gripping of the tool through mechanical amplification of the clamping force. No automatic slackening of the clamping force while machining with either clockwise or counter clockwise rotation or on spindle stop. Clamping and releasing effected by means of an Allen wrench.

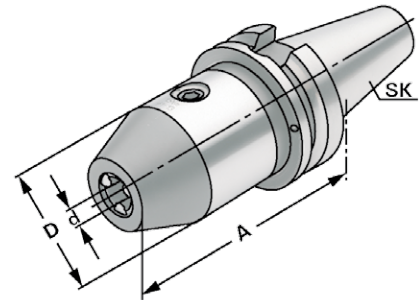
**W zestawie:** Z kluczem  
**Delivery:** With wrench





**Zastosowanie:**  
Do mocowania narzędzi z uchwytem prostym.

**Application:**  
For mounting tools with straight shanks.



JIS B 6339 AD/B  $\leq 0,030$  G6,3 15.000 min<sup>-1</sup> 14,04

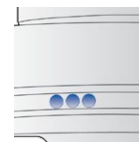
| Kod produktu<br>Order no. | SK    | Zakres średnic<br>Capacity<br>d | A   | D  |
|---------------------------|-------|---------------------------------|-----|----|
| 406.15.08                 | BT 40 | 0 – 8                           | 78  | 36 |
| 406.15.13                 | BT 40 | 1,0 – 13                        | 98  | 50 |
| 406.15.16                 | BT 40 | 2,5 – 16                        | 103 | 50 |
| 506.15.13                 | BT 50 | 1,0 – 13                        | 111 | 50 |
| 506.15.16                 | BT 50 | 2,5 – 16                        | 113 | 50 |

**Uwaga:** Wysoka precyzja i dokładna współśrodkowość  $\leq 0,03$  mm. Pewny chwyt narzędzia dzięki mechanicznemu wzmocnieniu siły mocowania. Brak automatycznego zmniejszania siły mocowania podczas obróbki z obrotem w prawo, w lewo lub przy zatrzymaniu wrzeciona. Mocowanie i zwalnianie odbywa się za pomocą klucza imbusowego.

**Note:** High precision and accurate concentricity of  $\leq 0.03$  mm. Secure gripping of the tool through mechanical amplification of the clamping force. No automatic slackening of the clamping force while machining with either clockwise or counter clockwise rotation or on spindle stop. Clamping and releasing effected by means of an Allen wrench.

**W zestawie:** Z kluczem  
**Delivery:** With wrench

**Wersja z wyważeniem**  
Balanced type



| Kod produktu<br>Order no. | Rozmiar<br>Size |
|---------------------------|-----------------|
|---------------------------|-----------------|

**Wyważenie w tolerancji G 2,5**  
Balancing at G 2.5

W25 **Bez raportu z wyważenia**  
Without balancing report

W25.2 **Z raportem z wyważenia**  
With balancing report

**Wyważanie niewyważonych narzędzi**  
Balancing of unbalanced tools

W25.1 **Bez raportu z wyważenia**  
Without balancing report

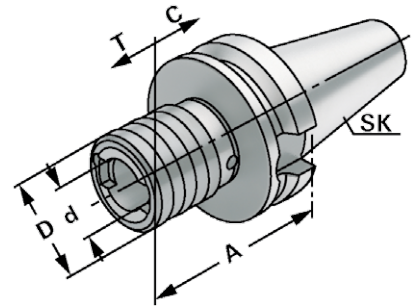




2



**Zastosowanie:**  
Do mocowania sprzęgieł przeciążeniowych do gwintowników.  
**Application:**  
For the chucking of quick change adaptors for taps.



JIS B 6339

Typ A

14.04

| Kod produktu<br>Order no. | SK    | Zakres średnic<br>Capacity | Rozmiar<br>Size | A   | D  | d  | C    | T    |
|---------------------------|-------|----------------------------|-----------------|-----|----|----|------|------|
| 305.16.12                 | BT 30 | M3 - M14                   | 1               | 64  | 38 | 19 | 7    | 7    |
| 305.16.20                 | BT 30 | M5 - M22                   | 2               | 95  | 54 | 31 | 12   | 12   |
| 405.16.12                 | BT 40 | M3 - M14                   | 1               | 65  | 38 | 19 | 7    | 7    |
| 405.16.20                 | BT 40 | M5 - M22                   | 2               | 93  | 54 | 31 | 12   | 12   |
| 405.16.36                 | BT 40 | M14 - M36                  | 3               | 166 | 78 | 48 | 20   | 20   |
| 505.16.12                 | BT 50 | M3 - M14                   | 1               | 100 | 38 | 19 | 7    | 7    |
| 505.16.20                 | BT 50 | M5 - M22                   | 2               | 105 | 54 | 31 | 12   | 12   |
| 505.16.36                 | BT 50 | M14 - M36                  | 3               | 142 | 78 | 48 | 17,5 | 17,5 |

**Uwaga:** Do centrów obróbczych bez wrzeciona synchronicznego.  
**Note:** For machining centres without synchronous spindle.





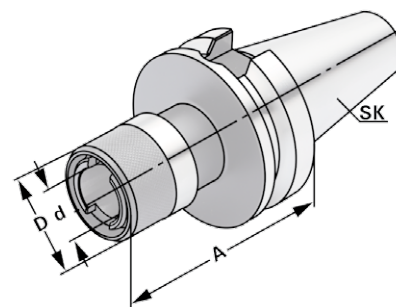
Quick change tapping chucks without length compensation on compression and expansion

(MAS 403 BT)



**Zastosowanie:**  
Do mocowania sprzęgieł przeciążeniowych do gwintowników.

**Application:**  
For the chucking of quick change adaptors for taps.



2

JIS B 6339  AD

 14.04

| Kod produktu<br>Order no. | SK    | Zakres średnic<br>Capacity | Rozmiar<br>Size | A   | D  | d  |
|---------------------------|-------|----------------------------|-----------------|-----|----|----|
| 305.16.12.1               | BT 30 | M3 – M14                   | 1               | 66  | 38 | 19 |
| 305.16.20.1               | BT 30 | M5 – M22                   | 2               | 80  | 54 | 31 |
| 405.16.12.1               | BT 40 | M3 – M14                   | 1               | 72  | 38 | 19 |
| 405.16.20.1               | BT 40 | M5 – M22                   | 2               | 93  | 54 | 31 |
| 405.16.36.1               | BT 40 | M14 – M36                  | 3               | 130 | 78 | 48 |
| 505.16.12.1               | BT 50 | M3 – M14                   | 1               | 80  | 38 | 19 |
| 505.16.20.1               | BT 50 | M5 – M22                   | 2               | 95  | 54 | 31 |
| 505.16.36.1               | BT 50 | M14 – M36                  | 3               | 142 | 78 | 48 |

**Uwaga:** Do centrów obróbczych bez wrzeciona synchronicznego.  
**Note:** For machining centres without synchronous spindle.





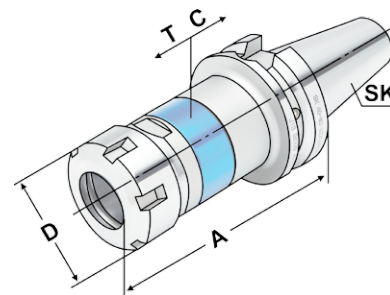
Tapping chucks for synchronisation for collets DIN 6499 (ISO 15488) ER-system

2



**Zastosowanie:**  
Do centrów obróbkowych z wrzecionem synchronicznym.

**Application:**  
For machining centres with synchronous spindle.



JIS B 6339



AD/B

$\nearrow \leq 0,060$

G6,3  
15.000 min<sup>-1</sup>



14.04

| Kod produktu<br>Order no. | SK    | Zakres średnic<br>Capacity | A   | D  | T   | C   |
|---------------------------|-------|----------------------------|-----|----|-----|-----|
| 406.16.02.10 *            | BT 40 | M3 – M12 (ER 16) SW25      | 81  | 28 | 0,5 | 0,5 |
| 406.16.02.13              | BT 40 | M3 – M16 (ER 20)           | 85  | 34 | 0,5 | 0,5 |
| 406.16.02.16              | BT 40 | M3 – M20 (ER 25)           | 89  | 42 | 0,5 | 0,5 |
| 406.16.02.20              | BT 40 | M3 – M27 (ER 32)           | 110 | 50 | 0,5 | 0,5 |
| 406.16.02.26              | BT 40 | M3 – M33 (ER 40)           | 115 | 63 | 0,5 | 0,5 |
| 506.16.02.10 *            | BT 50 | M3 – M12 (ER 16) SW25      | 95  | 28 | 0,5 | 0,5 |
| 506.16.02.13              | BT 50 | M3 – M16 (ER 20)           | 100 | 34 | 0,5 | 0,5 |
| 506.16.02.16              | BT 50 | M3 – M20 (ER 25)           | 110 | 42 | 0,5 | 0,5 |
| 506.16.02.20              | BT 50 | M3 – M27 (ER 32)           | 120 | 50 | 0,5 | 0,5 |
| 506.16.02.26              | BT 50 | M3 – M33 (ER 40)           | 120 | 63 | 0,5 | 0,5 |

<sup>2</sup> Nakrętka sześciokątna  
<sup>2</sup> Hexagonal clamping nut

<sup>3</sup> Mini nakrętka  
<sup>3</sup> Mini nut

**Uwaga:**

- Oprawki do gwintowania synchronicznego kompensują błędy synchronizacji.
- Minimalna kompensacja długości przy ściskaniu i rozszerzaniu równoważy bardzo małe różnice wysokości między wrzecionem synchronizującym a gwintownikiem, co może powodować duże siły tarcia na powierzchniach bocznych gwintu.
- Ewentualny wzrost siły osiowej podczas gwintowania jest zredukowany do minimum.
- Nadaje się do wewnętrznego podawania chłodziwa.
- Ciśnienie chłodziwa do max. 100 barów.

**Note:**

- *Synchro tapping chucks compensate synchronisation errors.*
- *Minimal length compensation on compression and expansion balances very small pitch differences between synchro spindle and tap, which can cause high frictional forces on the thread flanks.*
- *A possible increase of axial force during the tapping process is reduced to a minimum.*
- *Suitable for internal coolant.*
- *Coolant pressure up to max. 100 bar.*

**W zestawie:**

Z wyważoną nakrętką mocującą

**Delivery:**

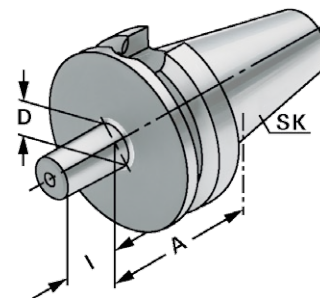
With balanced clamping nut





**Zastosowanie:**  
Do mocowania uchwytów wiertarskich.

**Application:**  
For mounting drill chucks.



JIS B 6339    Typ A     $\nearrow \leq 0,005$     G6,3  
15.000 min<sup>-1</sup>

| Kod produktu |       |     |    |      |
|--------------|-------|-----|----|------|
| Order no.    | SK    | D   | A  | I    |
| 305.14.12    | BT 30 | B12 | 25 | 18,5 |
| 305.14.16    | BT 30 | B16 | 25 | 24   |
| 405.14.12    | BT 40 | B12 | 25 | 18,5 |
| 405.14.16    | BT 40 | B16 | 25 | 24   |
| 405.14.18    | BT 40 | B18 | 32 | 32   |
| 505.14.16    | BT 50 | B16 | 32 | 24   |
| 505.14.18    | BT 50 | B18 | 32 | 32   |

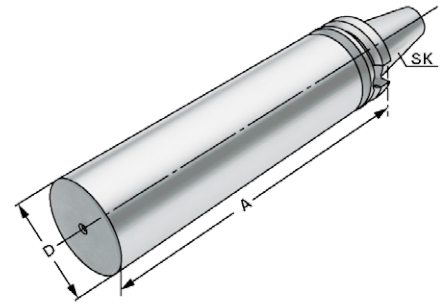




2



**Zastosowanie:**  
Do produkcji narzędzi specjalnych.  
**Application:**  
For the manufacturing of special tools.



JIS B 6339

Form A

JIS B 6339

Typ A

**Kod produktu**

Order no.

| Order no. | SK    | D    | A   |
|-----------|-------|------|-----|
| 305.17.40 | BT 30 | 40,5 | 160 |
| 405.17.63 | BT 40 | 63   | 250 |
| 505.17.97 | BT 50 | 97   | 315 |

**Wersja:**  
**Version:**

Stożek i kołnierz hartowane i szlifowane. Miękki korpus do późniejszej obróbki.  
Cone and flange hardened and grinded. Soft body for later processing.



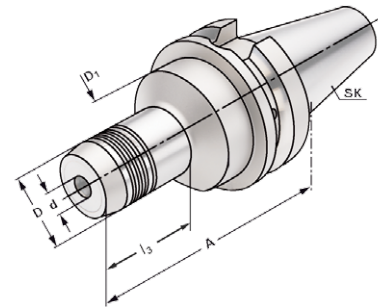


**Zastosowanie:**

Do mocowania narzędzi z chwytem cylindrycznym według DIN 1835 typ A + B + E i DIN 6535 typ HB + HE (powyżej  $\varnothing 20$  mm tylko z redukcją).

**Application:**

For mounting straight-shank tools acc. DIN 1835 form A+B+E and DIN 6535 form HB+HE (larger than dia. 20 mm only with reduction sleeve).



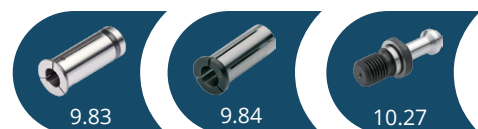
JIS B 6339 AD  $\sqrt{\text{Ra}} \leq 0,003$  G6,3 15.000 min<sup>-1</sup> 14,04

| Kod produktu |       |                   |     |    |                |                |                |                |
|--------------|-------|-------------------|-----|----|----------------|----------------|----------------|----------------|
| Order no.    |       |                   |     |    |                |                |                |                |
|              | SK    | d                 | A   | D  | D <sub>1</sub> | l <sub>1</sub> | l <sub>2</sub> | l <sub>3</sub> |
| 305.H06      | BT 30 | 6                 | 60  | 26 | 45             | 37             | 10             | 33             |
| 305.H08      | BT 30 | 8                 | 64  | 28 | 45             | 37             | 10             | 29             |
| 305.H10      | BT 30 | 10                | 64  | 30 | 45             | 42             | 10             | 37             |
| 305.H12      | BT 30 | 12                | 72  | 32 | 45             | 47             | 10             | 43             |
| 305.H14      | BT 30 | 14                | 70  | 34 | 45             | 47             | 10             | 45             |
| 305.H16      | BT 30 | <sup>060</sup> 16 | 90  | 38 | 45             | 52             | 10             | 47             |
| 305.H18      | BT 30 | 18                | 90  | 40 | 45             | 52             | 10             | 68             |
| 305.H20      | BT 30 | 20                | 90  | 42 | 45             | 52             | 10             | 68             |
|              |       |                   |     |    |                |                |                |                |
| 405.H06      | BT 40 | 6                 | 90  | 26 | 50             | 37             | 10             | 43             |
| 405.H08      | BT 40 | 8                 | 90  | 28 | 50             | 37             | 10             | 43,5           |
| 405.H10      | BT 40 | 10                | 90  | 30 | 50             | 42             | 10             | 44             |
| 405.H12      | BT 40 | 12                | 90  | 32 | 50             | 47             | 10             | 44,5           |
| 405.H14      | BT 40 | 14                | 90  | 34 | 50             | 47             | 10             | 47,5           |
| 405.H16      | BT 40 | 16                | 90  | 38 | 50             | 52             | 10             | 47,5           |
| 405.H18      | BT 40 | 18                | 90  | 40 | 50             | 52             | 10             | 47,5           |
| 405.H20      | BT 40 | 20                | 90  | 42 | 50             | 52             | 10             | 47,5           |
| 405.H25      | BT 40 | 25                | 90  | 50 | 63             | 58             | 10             | 51             |
| 405.H32      | BT 40 | 32                | 110 | 60 | 60             | 62             | 10             | 81,5           |
|              |       |                   |     |    |                |                |                |                |
| 405.H06.1    | BT 40 | 6                 | 150 | 26 | 50             | 102            | 10             | 102            |
| 405.H08.1    | BT 40 | 8                 | 150 | 28 | 50             | 103            | 10             | 103            |
| 405.H10.1    | BT 40 | 10                | 150 | 30 | 50             | 104            | 10             | 104            |
| 405.H12.1    | BT 40 | 12                | 150 | 32 | 50             | 105            | 10             | 105            |
| 405.H14.1    | BT 40 | 14                | 150 | 34 | 50             | 105            | 10             | 105            |
| 405.H16.1    | BT 40 | 16                | 150 | 38 | 50             | 106            | 10             | 106            |
| 405.H18.1    | BT 40 | 18                | 150 | 40 | 50             | 107            | 10             | 107            |
| 405.H20.1    | BT 40 | 20                | 150 | 42 | 50             | 108            | 10             | 108            |
| 405.H25.1    | BT 40 | 25                | 150 | 50 | 50             | 123            | 10             | 123            |
| 405.H32.1    | BT 40 | 32                | 150 | 60 | 50             | 123            | 10             | 123            |

W zestawie: Z kluczem  
Delivery: With wrench

**l<sub>1</sub> = Maks. głębokość mocowania**  
l<sub>1</sub> = max. clamping depth

**l<sub>2</sub> = Maks. zakres regulacji długości**  
l<sub>2</sub> = max. length adjustment range







2

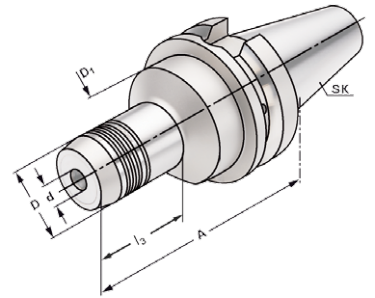


**Zastosowanie:**

Do mocowania narzędzi z chwytem cylindrycznym według DIN 1835 typ A + B + E i DIN 6535 typ HB + HE (powyżej  $\varnothing 20$  mm tylko z redukcją).

**Application:**

For mounting straight-shank tools acc. DIN 1835 form A+B+E and DIN 6535 form HB+HE (larger than dia. 20 mm only with reduction sleeve).



JIS B 6339



AD

$\nearrow \leq 0,003$

G6,3  
15.000 min<sup>-1</sup>



14.04

**Kod produktu**

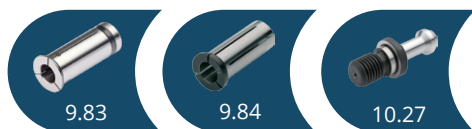
Order no.

| Order no. | SK    | d  | A   | D  | D <sub>1</sub> | l <sub>1</sub> | l <sub>2</sub> | l <sub>3</sub> |
|-----------|-------|----|-----|----|----------------|----------------|----------------|----------------|
| 405.H06.2 | BT 40 | 6  | 200 | 26 | 50             | 152            | 10             | 152            |
| 405.H08.2 | BT 40 | 8  | 200 | 28 | 50             | 153            | 10             | 153            |
| 405.H10.2 | BT 40 | 10 | 200 | 30 | 50             | 154            | 10             | 154            |
| 405.H12.2 | BT 40 | 12 | 200 | 32 | 50             | 155            | 10             | 155            |
| 405.H14.2 | BT 40 | 14 | 200 | 34 | 50             | 155            | 10             | 155            |
| 405.H16.2 | BT 40 | 16 | 200 | 38 | 50             | 156            | 10             | 156            |
| 405.H18.2 | BT 40 | 18 | 200 | 40 | 50             | 157            | 10             | 157            |
| 405.H20.2 | BT 40 | 20 | 200 | 42 | 50             | 158            | 10             | 158            |
| 405.H25.2 | BT 40 | 25 | 200 | 50 | 50             | 173            | 10             | 173            |
| 405.H32.2 | BT 40 | 32 | 200 | 60 | 50             | 173            | 10             | 173            |
|           |       |    |     |    |                |                |                |                |
| 505.H06   | BT 50 | 6  | 110 | 26 | 80             | 37             | 10             | 43             |
| 505.H08   | BT 50 | 8  | 110 | 28 | 80             | 37             | 10             | 43,5           |
| 505.H10   | BT 50 | 10 | 110 | 30 | 80             | 42             | 10             | 44             |
| 505.H12   | BT 50 | 12 | 110 | 32 | 80             | 47             | 10             | 42             |
| 505.H14   | BT 50 | 14 | 110 | 34 | 80             | 47             | 10             | 42             |
| 505.H16   | BT 50 | 16 | 110 | 38 | 80             | 52             | 10             | 45             |
| 505.H18   | BT 50 | 18 | 110 | 40 | 80             | 52             | 10             | 45             |
| 505.H20   | BT 50 | 20 | 110 | 42 | 80             | 52             | 10             | 47,5           |
| 505.H25   | BT 50 | 25 | 110 | 50 | 80             | 58             | 10             | 47,5           |
| 505.H32   | BT 50 | 32 | 110 | 60 | 80             | 62             | 10             | 47,5           |

W zestawie: Z kluczem  
Delivery: With wrench

l<sub>1</sub> = maks. głębokość mocowania.  
l<sub>1</sub> = max. clamping depth

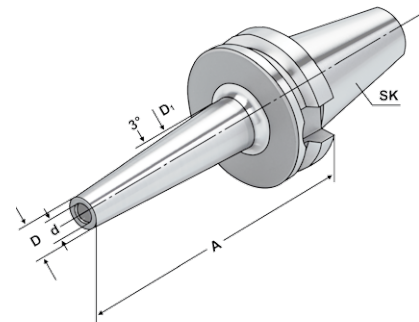
l<sub>2</sub> = maks. zakres regulacji długości  
l<sub>2</sub> = max. length adjustment range





**Zastosowanie:**  
Do mocowania narzędzi z chwytem walcowym.

**Application:**  
For mounting straight-shank tools.



2

JIS B 6339



$\nearrow \leq 0,003$

G2,5  
25.000 min<sup>-1</sup>

**Kod produktu**

Order no.

| Order no.   | SK    | d  | A   | D  | D <sub>1</sub> | l <sub>1</sub> | l <sub>2</sub> |
|-------------|-------|----|-----|----|----------------|----------------|----------------|
| 406.72.03   | BT 40 | 3  | 90  | 9  | 15,5           | 6              | -              |
| 406.72.04   | BT 40 | 4  | 90  | 10 | 16,5           | 8              | -              |
| 406.72.05   | BT 40 | 5  | 90  | 11 | 17,5           | 10             | -              |
| 406.72.06   | BT 40 | 6  | 90  | 12 | 18,5           | 36             | 10             |
| 406.72.08   | BT 40 | 8  | 90  | 14 | 20,5           | 36             | 10             |
| 406.72.10   | BT 40 | 10 | 90  | 16 | 22,5           | 42             | 10             |
| 406.72.12   | BT 40 | 12 | 90  | 18 | 24,5           | 47             | 10             |
|             |       |    |     |    |                |                |                |
| 406.72.03.1 | BT 40 | 3  | 120 | 9  | 19,5           | 6              | -              |
| 406.72.04.1 | BT 40 | 4  | 120 | 10 | 20,5           | 8              | -              |
| 406.72.05.1 | BT 40 | 5  | 120 | 11 | 21,5           | 10             | -              |
| 406.72.06.1 | BT 40 | 6  | 120 | 12 | 22,5           | 36             | 10             |
| 406.72.08.1 | BT 40 | 8  | 120 | 14 | 24,5           | 36             | 10             |
| 406.72.10.1 | BT 40 | 10 | 120 | 16 | 26,5           | 42             | 10             |
| 406.72.12.1 | BT 40 | 12 | 120 | 18 | 28,5           | 47             | 10             |
|             |       |    |     |    |                |                |                |
| 406.72.06.2 | BT 40 | 6  | 160 | 12 | 26,5           | 36             | 10             |
| 406.72.08.2 | BT 40 | 8  | 160 | 14 | 28,5           | 36             | 10             |
| 406.72.10.2 | BT 40 | 10 | 160 | 16 | 30,5           | 42             | 10             |
| 406.72.12.2 | BT 40 | 12 | 160 | 18 | 32,5           | 47             | 10             |

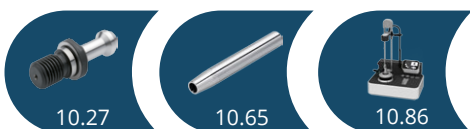
**Budowa:** smukła konstrukcja (zredukowany kontur interferencji)

**Version:** slim design (reduced interference contour)

Do narzędzi o średnicy 3, 4 i 5 mm należy używać wyłącznie pełnowęglkowych chwytów narzędziowych  
For ø 3, 4 and 5 mm only solid carbide tool shanks must be used

**Uwaga:** Oprawki odpowiednie do urządzeń indukcyjnych, stykowych i do zaciskania gorącym powietrzem.  
ø 3, 4, 5 z tolerancją h4 i ø 6 - ø 12 z tolerancją h6

**Note:** Toolholders suitable for induction-, contact- and hot air shrink units.  
ø 3, 4, 5 with h4-tolerance and ø 6 - ø 12 with h6-tolerance

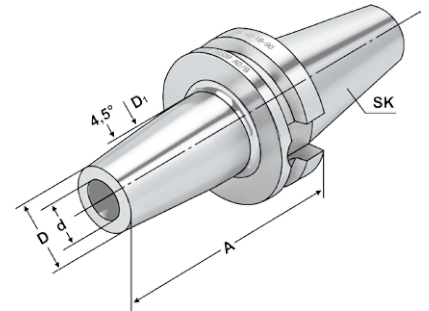




2



**Zastosowanie:**  
Do mocowania narzędzi z chwytem walcowym.  
**Application:**  
For mounting straight-shank tools.



JIS B 6339



AD/B

$\uparrow \leq 0,003$

G2,5  
25.000 min<sup>-1</sup>

**Kod produktu**  
Order no.

| Order no.   | SK    | d  | A   | D  | D <sub>1</sub> | l <sub>1</sub> | l <sub>2</sub> |
|-------------|-------|----|-----|----|----------------|----------------|----------------|
| 305.70.03 * | BT 30 | 3  | 80  | 11 | 15             | 10             | -              |
| 305.70.04 * | BT 30 | 4  | 80  | 14 | 22             | 20             | 5              |
| 305.70.05 * | BT 30 | 5  | 80  | 16 | 22             | 20             | 5              |
| 305.70.06 * | BT 30 | 6  | 80  | 21 | 27             | 36             | 10             |
| 305.70.08 * | BT 30 | 8  | 80  | 21 | 27             | 36             | 10             |
| 305.70.10 * | BT 30 | 10 | 90  | 24 | 32             | 42             | 10             |
| 305.70.12 * | BT 30 | 12 | 90  | 24 | 32             | 47             | 10             |
| 305.70.14 * | BT 30 | 14 | 90  | 27 | 34             | 47             | 10             |
| 305.70.16 * | BT 30 | 16 | 90  | 27 | 34             | 50             | 10             |
| 305.70.18 * | BT 30 | 18 | 90  | 33 | 42             | 50             | 10             |
| 305.70.20 * | BT 30 | 20 | 90  | 33 | 42             | 52             | 10             |
| 305.70.25 * | BT 30 | 25 | 100 | 44 | 53             | 58             | 10             |
| 406.70.03   | BT 40 | 3  | 80  | 11 | 15             | 10             | -              |
| 406.70.04   | BT 40 | 4  | 80  | 14 | 22             | 20             | 5              |
| 406.70.05   | BT 40 | 5  | 80  | 16 | 22             | 20             | 5              |
| 406.70.06   | BT 40 | 6  | 90  | 21 | 27             | 36             | 10             |
| 406.70.08   | BT 40 | 8  | 90  | 21 | 27             | 36             | 10             |
| 406.70.10   | BT 40 | 10 | 90  | 24 | 32             | 41             | 10             |
| 406.70.12   | BT 40 | 12 | 90  | 24 | 32             | 47             | 10             |
| 406.70.14   | BT 40 | 14 | 90  | 27 | 34             | 47             | 10             |
| 406.70.16   | BT 40 | 16 | 90  | 27 | 34             | 50             | 10             |
| 406.70.18   | BT 40 | 18 | 90  | 33 | 42             | 50             | 10             |
| 406.70.20   | BT 40 | 20 | 90  | 33 | 42             | 52             | 10             |
| 406.70.25   | BT 40 | 25 | 100 | 44 | 53             | 58             | 10             |
| 406.70.32   | BT 40 | 32 | 100 | 44 | 53             | 58             | 10             |

\* JIS B 6339 typ AD

\* JIS B 6339 form AD

Do narzędzi o średnicy 3, 4 i 5 mm należy używać wyłącznie pełnowęglkowych chwytów narzędziowych  
For  $\varnothing 3, 4$  and  $5$  mm only solid carbide tool shanks must be used

**Uwaga:** Oprawki odpowiednie do urządzeń indukcyjnych, stykowych i do zaciskania gorącym powietrzem.  
 $\varnothing 3, 4, 5$  z tolerancją h4 i  $\varnothing 6 - \varnothing 32$  z tolerancją h6

**Note:** Toolholders suitable for induction-, contact- and hot air shrink units.  
 $\varnothing 3, 4, 5$  with h4-tolerance and  $\varnothing 6 - \varnothing 32$  with h6-tolerance

l<sub>1</sub> = maks. głębokość mocowania.  
l<sub>1</sub> = max. clamping depth

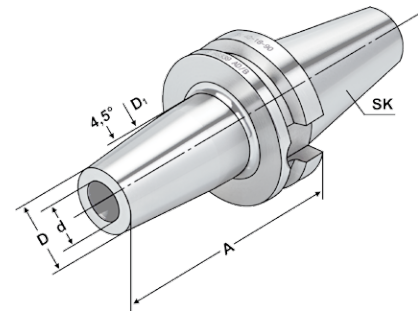
l<sub>2</sub> = maks. zakres regulacji długości  
l<sub>2</sub> = max. length adjustment range





**Zastosowanie:**  
Do mocowania narzędzi z chwytem walcowym.

**Application:**  
For mounting straight-shank tools.



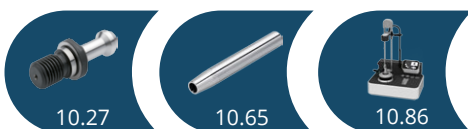
JIS B 6339 AD/B  $\uparrow \leq 0,003$  G2,5 25.000 min<sup>-1</sup>

| Kod produktu |       |    |     |    |                |                |                |
|--------------|-------|----|-----|----|----------------|----------------|----------------|
| Order no.    | SK    | d  | A   | D  | D <sub>1</sub> | l <sub>1</sub> | l <sub>2</sub> |
| 406.70.06.1  | BT 40 | 6  | 120 | 21 | 27             | 36             | 10             |
| 406.70.08.1  | BT 40 | 8  | 120 | 21 | 27             | 36             | 10             |
| 406.70.10.1  | BT 40 | 10 | 120 | 24 | 32             | 41             | 10             |
| 406.70.12.1  | BT 40 | 12 | 120 | 24 | 32             | 47             | 10             |
| 406.70.14.1  | BT 40 | 14 | 120 | 27 | 34             | 47             | 10             |
| 406.70.16.1  | BT 40 | 16 | 120 | 27 | 34             | 50             | 10             |
| 406.70.18.1  | BT 40 | 18 | 120 | 33 | 42             | 50             | 10             |
| 406.70.20.1  | BT 40 | 20 | 120 | 33 | 42             | 52             | 10             |
| 406.70.25.1  | BT 40 | 25 | 120 | 44 | 53             | 58             | 10             |
| 406.70.06.2  | BT 40 | 6  | 160 | 21 | 27             | 36             | 10             |
| 406.70.08.2  | BT 40 | 8  | 160 | 21 | 27             | 36             | 10             |
| 406.70.10.2  | BT 40 | 10 | 160 | 24 | 32             | 42             | 10             |
| 406.70.12.2  | BT 40 | 12 | 160 | 24 | 32             | 47             | 10             |
| 406.70.14.2  | BT 40 | 14 | 160 | 27 | 34             | 47             | 10             |
| 406.70.16.2  | BT 40 | 16 | 160 | 27 | 34             | 50             | 10             |
| 406.70.18.2  | BT 40 | 18 | 160 | 33 | 42             | 50             | 10             |
| 406.70.20.2  | BT 40 | 20 | 160 | 33 | 42             | 52             | 10             |
| 406.70.25.2  | BT 40 | 25 | 160 | 44 | 53             | 58             | 10             |
| 406.70.32.2  | BT 40 | 32 | 160 | 44 | 62             | 58             | 10             |

**Uwaga:** Oprawki odpowiednie do urządzeń indukcyjnych, stykowych i do zaciskania gorącym powietrzem.  $\varnothing$  3, 4, 5 z tolerancją h4 i  $\varnothing$  6 -  $\varnothing$  32 z tolerancją h6

**Note:** Toolholders suitable for induction-, contact- and hot air shrink units.  $\varnothing$  3, 4, 5 with h4-tolerance and  $\varnothing$  6 -  $\varnothing$  32 with h6-tolerance

l<sub>1</sub> = maks. głębokość mocowania      l<sub>2</sub> = maks. zakres regulacji długości  
l<sub>1</sub> = max. clamping depth              l<sub>2</sub> = max. length adjustment range



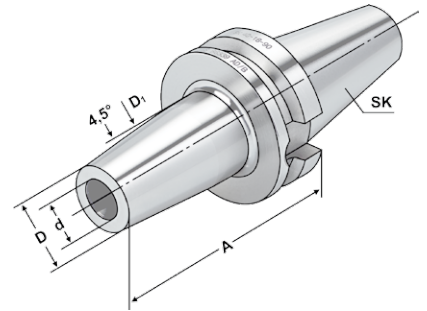


2



**Zastosowanie:**  
Do mocowania narzędzi z chwytem walcowym.

**Application:**  
For mounting straight-shank tools.



JIS B 6339



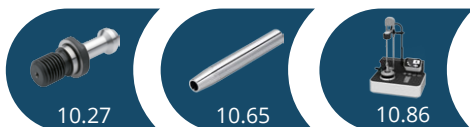
AD/B

$\nearrow \leq 0,003$

G2,5  
25.000 min<sup>-1</sup>

**Kod produktu**  
Order no.

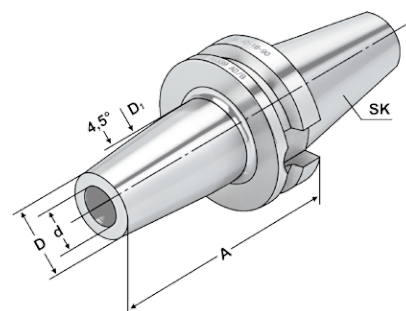
|             | SK    | d  | A   | D  | D <sub>1</sub> | l <sub>1</sub> | l <sub>2</sub> |
|-------------|-------|----|-----|----|----------------|----------------|----------------|
| 506.71.04   | BT 50 | 4  | 100 | 14 | 22             | 20             | 5              |
| 506.71.05   | BT 50 | 5  | 100 | 16 | 22             | 20             | 5              |
| 506.71.06   | BT 50 | 6  | 100 | 21 | 27             | 36             | 10             |
| 506.71.08   | BT 50 | 8  | 100 | 21 | 27             | 36             | 10             |
| 506.71.10   | BT 50 | 10 | 100 | 24 | 32             | 41             | 10             |
| 506.71.12   | BT 50 | 12 | 100 | 24 | 32             | 47             | 10             |
| 506.71.14   | BT 50 | 14 | 100 | 27 | 34             | 47             | 10             |
| 506.71.16   | BT 50 | 16 | 100 | 27 | 34             | 50             | 10             |
| 506.71.18   | BT 50 | 18 | 110 | 33 | 42             | 50             | 10             |
| 506.71.20   | BT 50 | 20 | 110 | 33 | 42             | 52             | 10             |
| 506.71.25   | BT 50 | 25 | 120 | 44 | 53             | 58             | 10             |
| 506.71.32   | BT 50 | 32 | 120 | 44 | 53             | 62             | 10             |
|             |       |    |     |    |                |                |                |
| 506.71.06.1 | BT 50 | 6  | 120 | 21 | 27             | 36             | 10             |
| 506.71.08.1 | BT 50 | 8  | 120 | 21 | 27             | 36             | 10             |
| 506.71.10.1 | BT 50 | 10 | 120 | 24 | 32             | 41             | 10             |
| 506.71.12.1 | BT 50 | 12 | 120 | 24 | 32             | 47             | 10             |
| 506.71.14.1 | BT 50 | 14 | 120 | 27 | 34             | 47             | 10             |
| 506.71.16.1 | BT 50 | 16 | 120 | 27 | 34             | 50             | 10             |
| 506.71.18.1 | BT 50 | 18 | 120 | 33 | 42             | 50             | 10             |
| 506.71.20.1 | BT 50 | 20 | 120 | 33 | 42             | 52             | 10             |





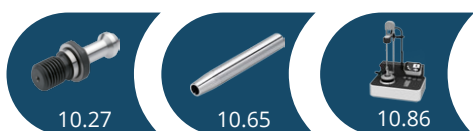
**Zastosowanie:**  
Do mocowania narzędzi z chwytem walcowym.

**Application:**  
For mounting straight-shank tools.



JIS B 6339 AD/B  $\leq 0,003$  G2,5 25.000 min<sup>-1</sup>

| Kod produktu |       |    |     |    |                |                |                |
|--------------|-------|----|-----|----|----------------|----------------|----------------|
| Order no.    | SK    | d  | A   | D  | D <sub>1</sub> | l <sub>1</sub> | l <sub>2</sub> |
| 505.71.06.2  | BT 50 | 6  | 160 | 21 | 27             | 36             | 10             |
| 505.71.08.2  | BT 50 | 8  | 160 | 21 | 27             | 36             | 10             |
| 505.71.10.2  | BT 50 | 10 | 160 | 24 | 32             | 41             | 10             |
| 505.71.12.2  | BT 50 | 12 | 160 | 24 | 32             | 47             | 10             |
| 505.71.14.2  | BT 50 | 14 | 160 | 27 | 34             | 47             | 10             |
| 505.71.16.2  | BT 50 | 16 | 160 | 27 | 34             | 50             | 10             |
| 505.71.18.2  | BT 50 | 18 | 160 | 33 | 42             | 50             | 10             |
| 505.71.20.2  | BT 50 | 20 | 160 | 33 | 42             | 52             | 10             |
| 505.71.25.2  | BT 50 | 25 | 160 | 44 | 53             | 58             | 10             |
| 505.71.32.2  | BT 50 | 32 | 160 | 44 | 53             | 62             | 10             |
| 505.71.06.3  | BT 50 | 6  | 200 | 21 | 27             | 36             | 10             |
| 505.71.08.3  | BT 50 | 8  | 200 | 21 | 27             | 36             | 10             |
| 505.71.10.3  | BT 50 | 10 | 200 | 24 | 32             | 41             | 10             |
| 505.71.12.3  | BT 50 | 12 | 200 | 24 | 32             | 47             | 10             |
| 505.71.14.3  | BT 50 | 14 | 200 | 27 | 34             | 47             | 10             |
| 505.71.16.3  | BT 50 | 16 | 200 | 27 | 34             | 50             | 10             |
| 505.71.18.3  | BT 50 | 18 | 200 | 33 | 42             | 50             | 10             |
| 505.71.20.3  | BT 50 | 20 | 200 | 33 | 42             | 52             | 10             |
| 505.71.25.3  | BT 50 | 25 | 200 | 44 | 53             | 58             | 10             |

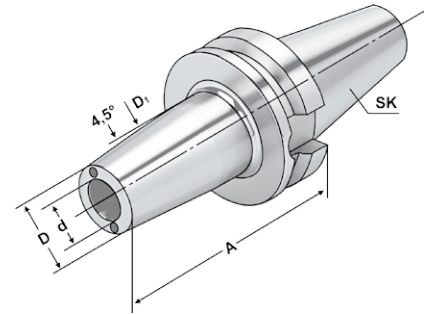




2



**Zastosowanie:**  
Do mocowania narzędzi z chwytem walcowym.  
**Application:**  
For mounting straight-shank tools.



JIS B 6339



AD/B

$\nearrow \leq 0,003$

G2,5  
25.000 min<sup>-1</sup>

**Kod produktu**

Order no.

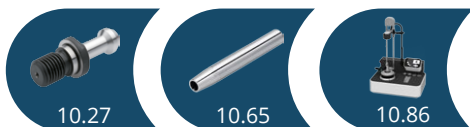
| Order no.   | SK    | d  | A   | D  | D <sub>1</sub> | l <sub>1</sub> | l <sub>2</sub> |
|-------------|-------|----|-----|----|----------------|----------------|----------------|
| 406.70.06.K | BT 40 | 6  | 90  | 21 | 27             | 36             | 10             |
| 406.70.08.K | BT 40 | 8  | 90  | 21 | 27             | 36             | 10             |
| 406.70.10.K | BT 40 | 10 | 90  | 24 | 32             | 41             | 10             |
| 406.70.12.K | BT 40 | 12 | 90  | 24 | 32             | 47             | 10             |
| 406.70.14.K | BT 40 | 14 | 90  | 27 | 34             | 47             | 10             |
| 406.70.16.K | BT 40 | 16 | 90  | 27 | 34             | 50             | 10             |
| 406.70.18.K | BT 40 | 18 | 90  | 33 | 42             | 50             | 10             |
| 406.70.20.K | BT 40 | 20 | 90  | 33 | 42             | 52             | 10             |
| 406.70.25.K | BT 40 | 25 | 100 | 44 | 53             | 58             | 10             |
|             |       |    |     |    |                |                |                |
| 506.71.06.K | BT 50 | 6  | 100 | 21 | 27             | 36             | 10             |
| 506.71.08.K | BT 50 | 8  | 100 | 21 | 27             | 36             | 10             |
| 506.71.10.K | BT 50 | 10 | 100 | 24 | 32             | 41             | 10             |
| 506.71.12.K | BT 50 | 12 | 100 | 24 | 32             | 47             | 10             |
| 506.71.14.K | BT 50 | 14 | 100 | 27 | 34             | 47             | 10             |
| 506.71.16.K | BT 50 | 16 | 100 | 27 | 34             | 50             | 10             |
| 506.71.18.K | BT 50 | 18 | 110 | 33 | 42             | 50             | 10             |
| 506.71.20.K | BT 50 | 20 | 110 | 33 | 42             | 52             | 10             |

**Hinweis:** Oprawki odpowiednie do urządzeń indukcyjnych, stykowych i do zaciskania gorącym powietrzem.  
ø 6 - ø 25 z tolerancją h6

**Note:** Toolholders suitable for induction-, contact- and hot air shrink units.  
ø 6 - ø 25 with h<sub>6</sub>-tolerance

l<sub>1</sub> = maks. głębokość mocowania  
l<sub>1</sub> = max. clamping depth

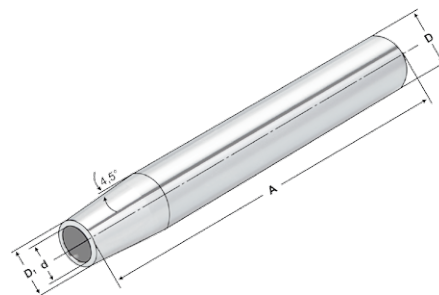
l<sub>2</sub> = maks. zakres regulacji długości  
l<sub>2</sub> = max. length adjustment range





**Zastosowanie:**  
Do mocowania narzędzi z chwyt-  
tem walcowym w oprawkach  
termokurczliwych.

**Application:**  
For mounting straight-shank tools.



2



AD

 $\nabla \leq 0,003$ **Kod produktu**

Order no.

| Order no.  | D  | d  | D <sub>1</sub> | A   | l <sub>1</sub> | l <sub>2</sub> |
|------------|----|----|----------------|-----|----------------|----------------|
| 120.70.03  | 20 | 3  | 10             | 150 | 15             | 5              |
| 120.70.04  | 20 | 4  | 10             | 150 | 20             | 5              |
| 120.70.05  | 20 | 5  | 10             | 150 | 20             | 5              |
| 120.70.06* | 20 | 6  | 10             | 150 | 36             | 10             |
| 120.70.08* | 20 | 8  | 12             | 150 | 36             | 10             |
| 120.70.10* | 20 | 10 | 14             | 150 | 42             | 10             |
| 120.70.12* | 20 | 12 | 16             | 150 | 47             | 10             |

\* z ogranicznikiem | \* with end stop

**Do narzędzi o średnicy 3, 4 i 5 mm należy używać wyłącznie pełnowęglkowych chwytów narzędziowych!**

*For ø 3, 4 and 5 mm only solid carbide tool shanks must be used!*

**Uwaga:** Oprawki odpowiednie do urządzeń indukcyjnych, stykowych i do zaciskania gorącym powietrzem.  
ø 3, 4, 5 z tolerancją h4 i ø 6 - ø 32 z tolerancją h6

**Note:** Toolholders suitable for induction-, contact- and hot air shrink units.  
ø 3, 4, 5 with h<sub>4</sub>-tolerance and ø 6 - ø32 with h<sub>6</sub>-tolerance

l<sub>1</sub> = Maks. głębokość mocowanial<sub>1</sub> = max. clamping depthl<sub>2</sub> = Maks. zakres regulacji długościl<sub>2</sub> = max. length adjustment range





2

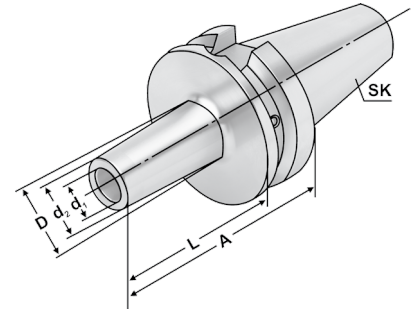


**Zastosowanie:**

Do mocowania wkręcanych frezów z gwintem.

**Application:**

For mounting screw-in cutters with thread.



JIS B 6339



AD/B

$\uparrow \leq 0,003$

G6,3  
15.000 min<sup>-1</sup>

| Kod produktu<br>Order no. | SK    | M  | d <sub>1</sub> <sup>H4</sup> | d <sub>2</sub> | D  | A   | L   |
|---------------------------|-------|----|------------------------------|----------------|----|-----|-----|
| 406.06.06                 | BT 40 | 6  | 6,5                          | 10             | 13 | 52  | 25  |
| 406.06.06.1               | BT 40 | 6  | 6,5                          | 10             | 20 | 77  | 50  |
| 406.06.06.2               | BT 40 | 6  | 6,5                          | 10             | 23 | 102 | 75  |
| 406.06.08                 | BT 40 | 8  | 8,5                          | 13             | 15 | 52  | 25  |
| 406.06.08.1               | BT 40 | 8  | 8,5                          | 13             | 23 | 77  | 50  |
| 406.06.08.2               | BT 40 | 8  | 8,5                          | 13             | 23 | 102 | 75  |
| 406.06.08.3               | BT 40 | 8  | 8,5                          | 13             | 25 | 127 | 100 |
| 406.06.10                 | BT 40 | 10 | 10,5                         | 18             | 20 | 52  | 25  |
| 406.06.10.1               | BT 40 | 10 | 10,5                         | 18             | 23 | 77  | 50  |
| 406.06.10.2               | BT 40 | 10 | 10,5                         | 18             | 28 | 102 | 75  |
| 406.06.10.3               | BT 40 | 10 | 10,5                         | 18             | 32 | 127 | 100 |
| 406.06.12                 | BT 40 | 12 | 12,5                         | 21             | 24 | 52  | 25  |
| 406.06.12.1               | BT 40 | 12 | 12,5                         | 21             | 24 | 77  | 50  |
| 406.06.12.2               | BT 40 | 12 | 12,5                         | 21             | 31 | 102 | 75  |
| 406.06.12.3               | BT 40 | 12 | 12,5                         | 21             | 33 | 127 | 100 |
| 406.06.12.4               | BT 40 | 12 | 12,5                         | 21             | 36 | 152 | 125 |
| 406.06.16                 | BT 40 | 16 | 17                           | 29             | 29 | 52  | 25  |
| 406.06.16.1               | BT 40 | 16 | 17                           | 29             | 34 | 77  | 50  |
| 406.06.16.2               | BT 40 | 16 | 17                           | 29             | 34 | 102 | 75  |
| 406.06.16.3               | BT 40 | 16 | 17                           | 29             | 36 | 127 | 100 |
| 406.06.16.4               | BT 40 | 16 | 17                           | 29             | 40 | 152 | 125 |
| 406.06.16.5               | BT 40 | 16 | 17                           | 29             | 42 | 177 | 150 |
| 506.06.08.1               | BT 50 | 8  | 8,5                          | 13             | 23 | 88  | 50  |
| 506.06.08.3               | BT 50 | 8  | 8,5                          | 13             | 25 | 138 | 100 |
| 506.06.08.5               | BT 50 | 8  | 8,5                          | 13             | 30 | 188 | 150 |
| 506.06.10.1               | BT 50 | 10 | 10,5                         | 18             | 23 | 88  | 50  |
| 506.06.10.3               | BT 50 | 10 | 10,5                         | 18             | 32 | 138 | 100 |
| 506.06.10.5               | BT 50 | 10 | 10,5                         | 18             | 37 | 188 | 150 |
| 506.06.12.1               | BT 50 | 12 | 12,5                         | 21             | 24 | 88  | 50  |
| 506.06.12.3               | BT 50 | 12 | 12,5                         | 21             | 33 | 138 | 100 |
| 506.06.12.5               | BT 50 | 12 | 12,5                         | 21             | 40 | 188 | 150 |
| 506.06.16.1               | BT 50 | 16 | 17                           | 29             | 34 | 88  | 50  |
| 506.06.16.2               | BT 50 | 16 | 17                           | 29             | 36 | 113 | 75  |
| 506.06.16.3               | BT 50 | 16 | 17                           | 29             | 36 | 138 | 100 |
| 506.06.16.5               | BT 50 | 16 | 17                           | 29             | 43 | 188 | 150 |

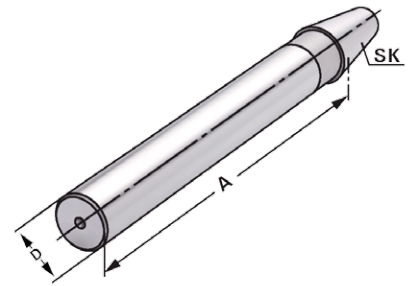


Test arbors



**Zastosowanie:**  
Do kontroli obrabiarek zgodnie z zaleceniem ISO R230 lub do testów wrzeciona.

**Application:**  
For the inspection of machine tools according to ISO recommendation R230 or for testing the tool spindle.



JIS B 6339    Typ A     $\nabla \leq 0,003$

| Kod produktu<br>Order no. | SK    | A   | D  | Tolerancja<br>Tolerance | maks. odchylenie koncentryczności<br>max. concentricity deviation |
|---------------------------|-------|-----|----|-------------------------|---|
| 305.18.32                 | BT 30 | 300 | 32 | 0,003                   | 0,003   |
| 405.18.40                 | BT 40 | 300 | 40 | 0,003                   | 0,003   |
| 505.18.50                 | BT 50 | 300 | 50 | 0,003                   | 0,003   |

W zestawie:    Dostawa z raportem z testów  
Delivery:        Delivery with test certificate

Drewniana skrzynia na trzpień kontrolne  
Wooden box for test arbors



**Zastosowanie:**  
Do przechowywania trzpieni kontrolnych.

**Application:**  
For the storage of test arbors.



| Kod produktu<br>Order no. | Wymiary<br>Size | Dla stożków<br>for cones |
|---------------------------|-----------------|--------------------------|
| 701.18                    | 460 × 130 × 115 | BT 30 / 40 / 50          |