



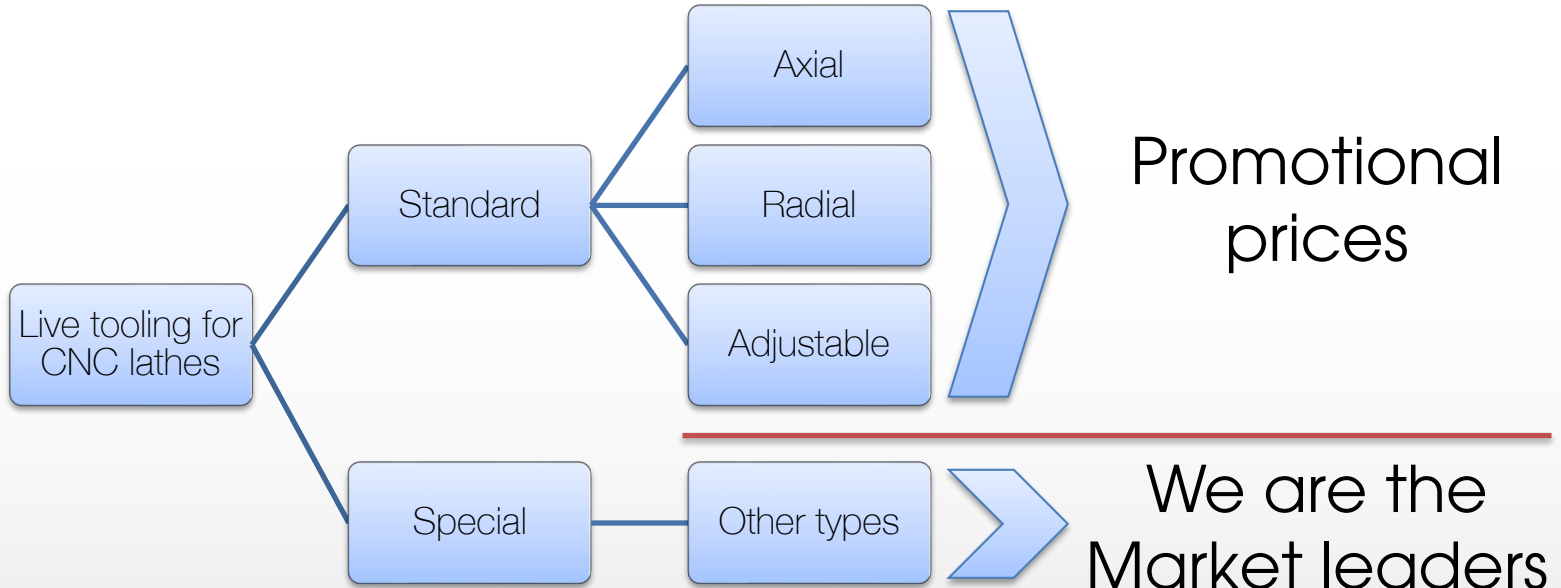
Live tooling for CNC lathes

Live tooling for CNC lathes

- Modern lathes with live tools have become more versatile, and allow drilling, tapping, milling anywhere in the tool.
 - Live tools are applications similar to other Madaula products adapted to lathes with driven turrets.
 - In the market we can find 3 main turret categories: VDI Shank, Bolt (BMT) and other systems.
 - Type of turrets: tools mounted on inner diameter (Sauter, Okuma, etc.) or tools mounted in outer diameter (Mazak, Mori Seiki, Miyano, etc.)
-

Production Program

Live tooling for CNC lathes





Axial for DOOSAN

BMT-55 / ER-25

Ratio 1:1 - IN=OUT / 6.000 rpm Max.



Axial for DOOSAN

BMT-65 / ER-32

Ratio 1:1 - IN=OUT / 6.000 rpm Max.



Axial for HWACHEON & DAEWOO PUMA

BMT-75 / ER-40

Ratio 1:1 - IN=OUT / 4.000 rpm Max.



Axial for NAKAMURA

BMT-75 / ER-40

Ratio 1:1 - IN=OUT / 6.000 rpm Max.



Axial for MURATEC

VDI-40 DIN-1809 / CAPTO C4

Ratio 1:1 - IN=OUT / 5.000 rpm Max.



Axial for TRAUB

Cyl. Ø28 + Gear / ER-11

Ratio 1:1 - IN=OUT / 12.000 rpm Max.

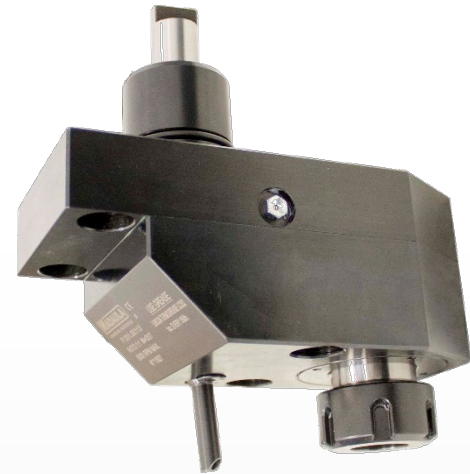
P.001 – Axial Offset Live tools



Axial Offset for MAZAK
VDI-40 / ER-20M
Ratio 1:1.72 - IN=OUT / 5.000 rpm Max.



Axial Offset for DUPLOMATIC
VDI-50 / ER-40
Ratio 1:1 - IN=OUT / 3.000 rpm Max.



Axial Offset for MURATEC
Cyl. Ø40 / ER-25
Ratio 1:1 - IN=OUT / 6.000 rpm Max.



Axial Speeder for CMZ
ER-11M
Ratio 1:5 - IN=OUT / 15.000 rpm Max.



Axial Speeder for OKUMA
VDI-30 / ER-11A
Ratio 1:4 - IN≠OUT / 18.000 rpm Max.



Axial Speeder for DAEWOO PUMA
BMT-55 / ER-16
Ratio 1:5 - IN=OUT / 15.000 rpm Max.



Axial Reducer for GORATU

VDI-50 DIN-5482 / ER-40

Ratio 3:1 - IN=OUT / 2.000 rpm Max.



Axial Reducer for CMZ

ER-32

Ratio 3:1 - IN≠OUT / 2.000 rpm Max.



Axial Reducer for OKUMA

VDI-40 / Ø40 Arbor

Ratio 3:1 - IN≠OUT / 2.500 rpm Max.



Axial IC for DOOSAN

BMT-65 / ER-32

Ratio 1:1 - IN=OUT / 6.000 rpm Max.



Axial IC for DAEWOO PUMA

BMT-85 / ER-50

Ratio 1:1 – IN=OUT / 6.000 rpm Max.



Axial IC for FAMAR TANDEM

Cyl. Ø70 / HSK-63A

Ratio 1:1 – IN=OUT / 6.000 rpm Max.



Axial IC for OKUMA

VDI-40 / ER-32

Ratio 1:1 - IN=OUT / 6.000 rpm Max.



Axial IC for SAUTER

VDI-60 / ER-40

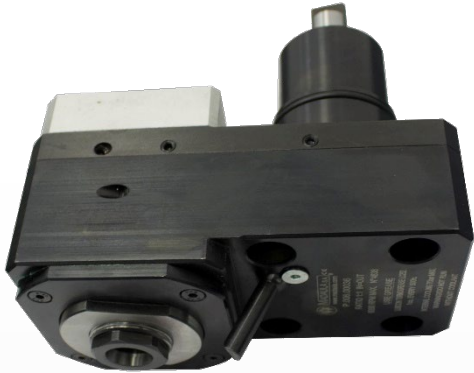
Ratio 1:1 – IN=OUT / 3.000 rpm Max.



Axial IC for SAUTER

Cyl. Ø80 DIN-5480 / HSK-80C

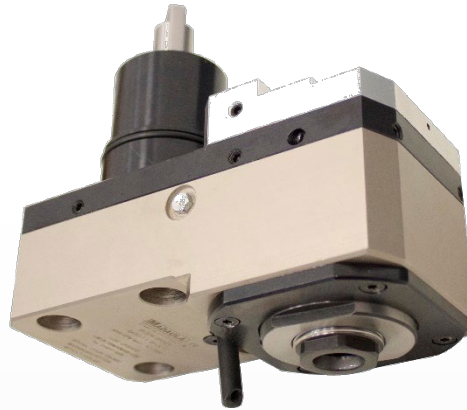
Ratio 1:1 – IN=OUT / 4.000 rpm Max.



Axial Offset IC for NAKAMURA

BMT-55 / ER-25A

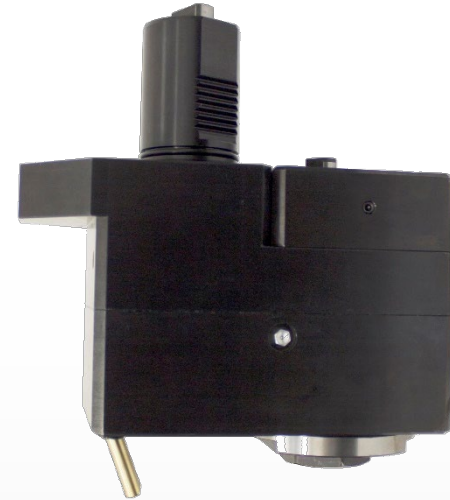
Ratio 1:1 - IN=OUT / 6.000 rpm Max.



Axial Offset IC for NAKAMURA

BMT-55 / ER-25A

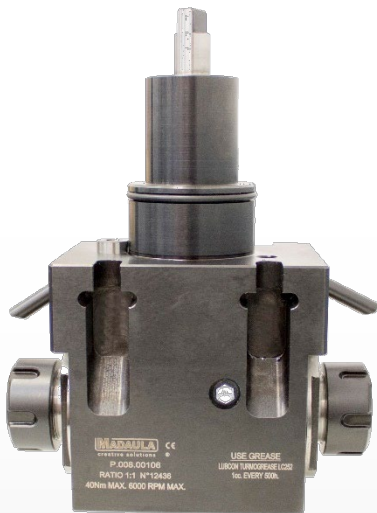
Ratio 1:1 - IN=OUT / 6.000 rpm Max.



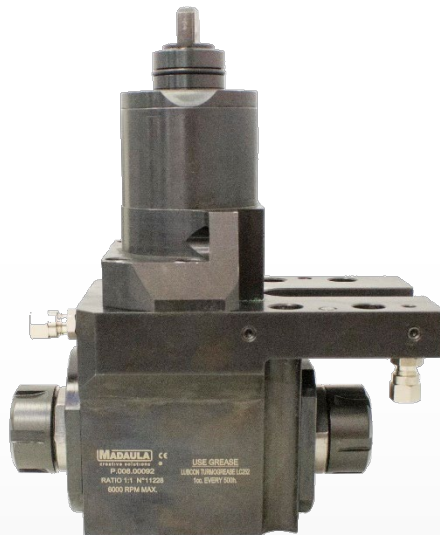
Axial Offset IC for MAZAK

VDI-50 / ER-40A

Ratio 1:1 – IN=OUT / 4.000 rpm Max.



Radial double output for DOOSAN
BMT-55 / ER-25 (x2)
Ratio 1:1 / 6.000 rpm Max. / 40Nm Max.



Radial double output for MORI SEIKI
ER-25 (x2)
Ratio 1:1 / 6.000 rpm Max.



Radial 2+2 outputs for CHIRON
Cyl. Ø68 DIN-5480 / MMT-22 (x4)
Ratio 1:3 / 12.000 rpm Max. / 10Nm Max.



Axial Reducer IC for DUPLOMATIC
VDI-60 / ER-50
Ratio 2:1 - IN≠OUT / 1.500 rpm Max.



Axial Reducer IC for GORATU
VDI-60 DIN-5482 / WELDON-32
Ratio 2:1 - IN≠OUT / 1.500 rpm Max.



Radial for NAKAMURA

BMT-44 / ER-25

Ratio 1:1 - IN=OUT / 6.000 rpm Max.



Radial for DOOSAN

BMT-55 / ER-25

Ratio 1:1 - IN=OUT / 6.000 rpm Max.



Radial for DOOSAN

BMT-65 / ER-25

Ratio 1:1 - IN=OUT / 6.000 rpm Max.



Radial for DAEWOO PUMA

BMT-75 / ER-40

Ratio 1:1 - IN=OUT / 3.500 rpm Max.



Radial for SAUTER

VDI-40 DIN-5480 / ER-32

Ratio 1:1 - IN=OUT / 4.000 rpm Max.



Radial for MANURHIN

ER-16

Ratio 1:1 - IN=OUT / 8.000 rpm Max.

P.011 – Radial Set-back Live tools



Radial Set-Back for EMCO

Double VDI-30 DIN-5480 / ER-20
Ratio 1:1 - IN≠OUT / 2.500 rpm Max.



Radial Set-Back for HANWHA

VDI-30 / ER-25A
Ratio 1:1 - IN≠OUT / 4.000 rpm Max.



Radial Set-Back

HSK-40 KOMET
Ratio 1:1 - IN≠OUT / 4.000 rpm Max.

P.012 – Fixed Angle Live tools



Fixed 64° for EMAG

VDI-40 / ER-16A

Ratio 1:1.27 - IN≠OUT / 4.000 rpm Max.



Fixed 27° for EMAG

VDI-40 / ER-16A

Ratio 1:1.27 - IN≠OUT / 4.000 rpm Max.



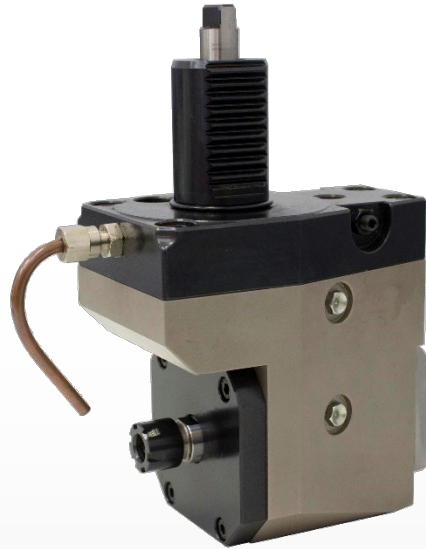
Fixed 15° for MIYANO

Cyl. Ø54 / ER-25

Ratio 1:1 - IN≠OUT / 4.000 rpm Max.



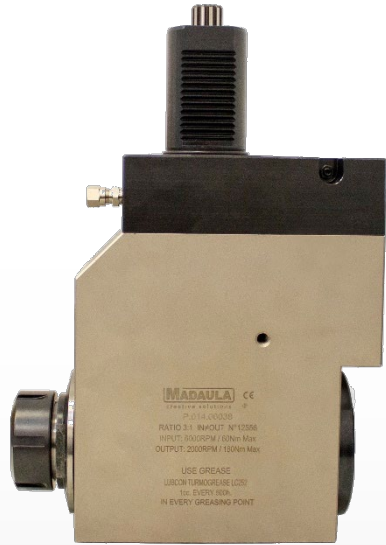
Radial Speeder for MURATEC
Cyl. Ø40 / ER-20
Ratio 1:3 - IN≠OUT / 12.000 rpm Max.



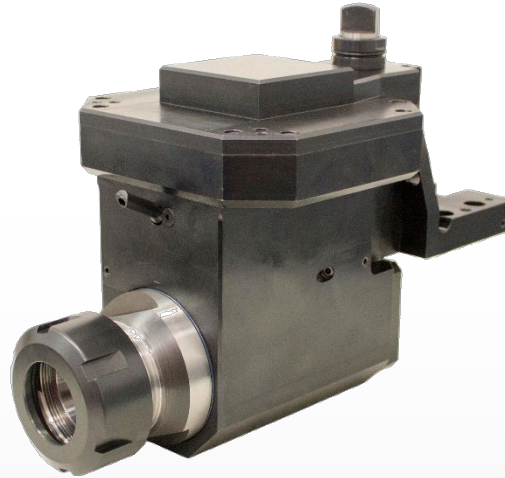
Radial Speeder for SCHAUBLIN
VDI-30 DIN-1809 / ER-11M
Ratio 1:3 – IN=OUT / 15.000 rpm Max.



Radial Speeder for BIGLIA
BMT-55 / ER-20
Ratio 1:2 - IN≠OUT / 12.000 rpm Max.



Radial Reducer for SAUTER
VDI-50 DIN-5482 / ER-40
Ratio 3:1 - IN≠OUT / 2.000 rpm Max.



Radial Reducer for MORI SEIKI
SL-200 / ER-50
Ratio 4:1 – IN=OUT / 4.000 rpm Max.



Radial Reducer for EMAG
VDI-40 / WELDON Ø20
Ratio 3:1 – IN=OUT / 6.000 rpm Max.

P.016 – Radial IC Live tools



Radial IC for DAEWOO PUMA
BMT-65 / ER-32
Ratio 1:1 – IN=OUT / 6.000 rpm Max.



Radial IC for DOOSAN
BMT-65 DIN-1809 / ER-32
Ratio 1:1 – IN=OUT / 6.000 rpm Max.



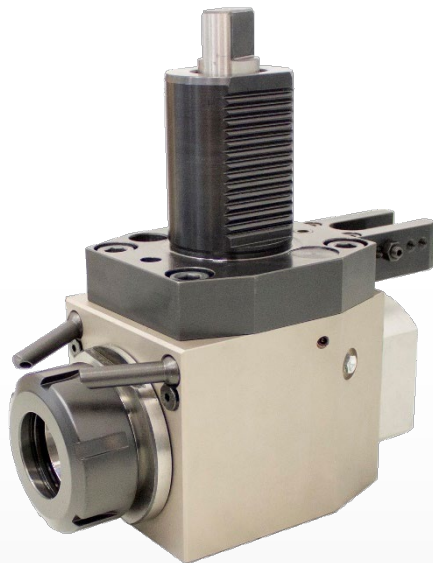
Radial IC for DAEWOO PUMA
BMT-85 / ER-50
Ratio 1:1 – IN=OUT / 3.000 rpm Max.



Radial IC for SAUTER

VDI-50 DIN-5480 / ER-40

Ratio 1:1 - IN≠OUT / 4.000 rpm Max.



Radial IC for DUPLOMATIC

VDI-50 / ER-40

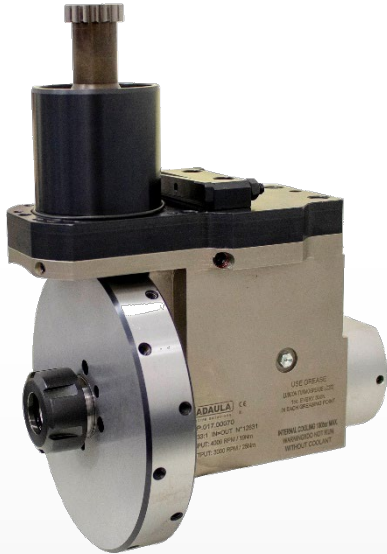
Ratio 1:1 – IN≠OUT / 4.000 rpm Max.



Radial IC for MIYANO

Cyl. Ø45 + Gear / ER-25

Ratio 1:1 – IN≠OUT / 4.000 rpm Max.



Radial Set-Back IC for SCHÜTTE
Cyl. Ø62 / ER-25
Ratio 1.33:1 – IN=OUT / 3.000 rpm Max.



Radial Set-Back IC for TRAUB
VDI-30 / ER-25
Ratio 1:1 – IN=OUT / 8.000 rpm Max.



Radial Set-Back IC for GURUTZPE
VDI-60 DIN-5482 / CAPTO C6
Ratio 1:1 – IN=OUT / 2.000 rpm Max.



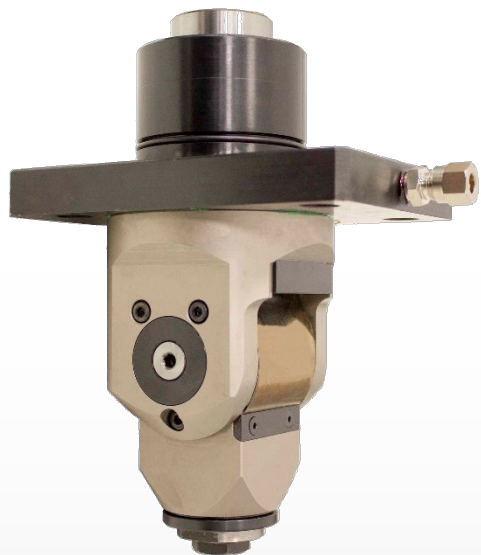
Radial Adjustable $\pm 105^\circ$ for DOOSAN
BMT-65 / ER-25
Ratio 1:1 – IN=OUT / 6.000 rpm Max.



Radial Adjustable 0-90° for MURATA
Cyl. $\varnothing 40$ / ER-20A
Ratio 1:1 – IN \neq OUT / 6.000 rpm Max.



Radial Adjustable 0-90° for MORI SEIKI
Cyl. $\varnothing 60$ / ER-25
Ratio 1:1 – IN \neq OUT / 6.000 rpm Max.



Radial Adjust. 0-90° for MORI SEIKI
Cyl. Ø60 / ER-16A
Ratio 1:1 – IN≠OUT / 6.000 rpm Max.



Radial Adjust. 0-90° for BARUFFALDI
VDI-50 / ER-32
Ratio 1:1 – IN≠OUT / 4.000 rpm Max.



Radial Adjust. ±120° for BARUFFALDI
VDI-60 / ISO-40 DIN-2079
Ratio 1:1 – IN=OUT / 2.000 rpm Max.

P.023 – Multiple Outputs Live tools



Axial 4 Outputs IC for SAUTER
Cyl. Ø80 DIN-5480 / ABS-40
Ratio 1:1 – IN≠OUT / 4.000 rpm Max.



Axial Offset 2 Outputs for DMG
Cyl. Ø40 + Gear / ER-11
Ratio 1:3 – IN=OUT / 15.000 rpm Max.



Axial 4 Outputs
Cyl. Ø120 / ER-20M
Ratio 1:1 – IN≠OUT / 6.500 rpm Max.



Toolholder for TRAUB



Toolholder 2 Outputs for TRAUB
Cyl. Ø28 / ER-8



Toolholder for MAZAK
VDI-50 / KM-63



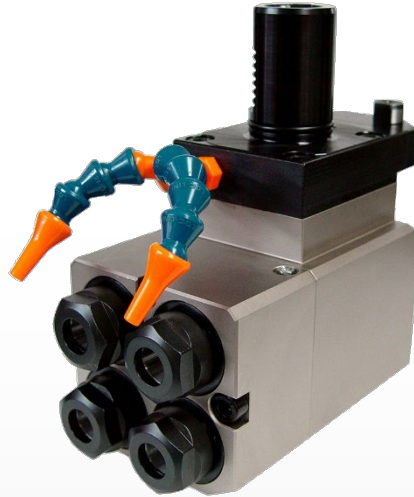
Axial Offset Reducer for GORATU
VDI-50 / CAPTO C5
Ratio 2:1 – IN≠OUT / 2.000 rpm Max.



Axial Offset Reducer for MORI SEIKI
ER-32A
Ratio 4:1 – IN≠OUT / 4.000 rpm Max.



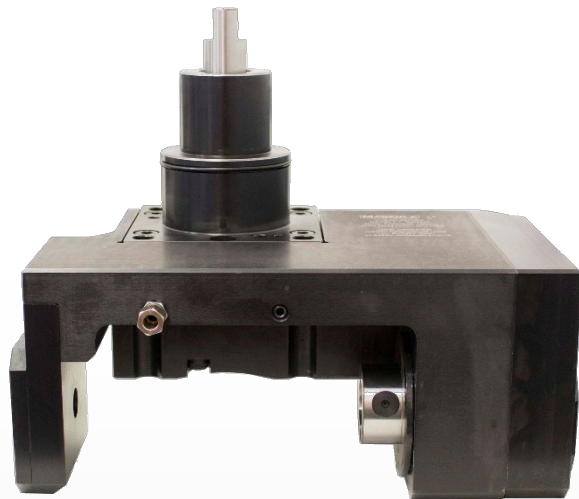
Radial 2 Outputs for FAMAR
Cyl. Ø52.8 / ER-20
Ratio 1:1 – IN=OUT / 4.000 rpm Max.



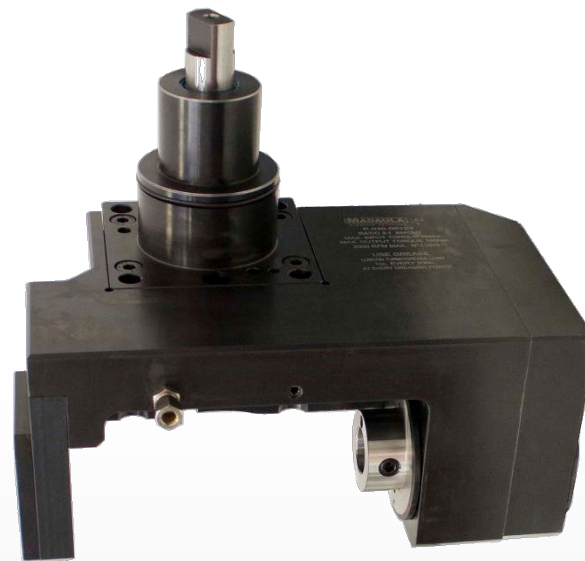
Radial 4 Outputs for MAZAK
VDI-40 / ER-20
Ratio 1:1 – IN=OUT / 3.000 rpm Max.



Radial 2 Outputs for HANWHA
VDI-40 DIN-1809 / ER-20M
Ratio 1:1 – IN≠OUT / 6.000 rpm Max.



Saw-Mill Reducer for DOOSAN
BMT-85 / ABS-50
Ratio 3:1 – IN≠OUT / 2.000 rpm Max.



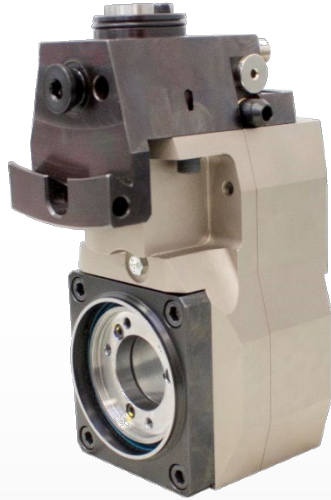
Saw-Mill for DOOSAN
BMT-85 / ABS-50
Ratio 1:1 – IN≠OUT / 2.000 rpm Max.



Polygon Maker for TRAUB

Cyl. Ø28 / Special Polyg.

Ratio 1:1 – IN=OUT / 6.000 rpm Max.



Thread Whirling for TRAUB
Horn Cutting Head
Ratio 3:1 – IN≠OUT / 6.000 rpm Max.



Thread Whirling for TRAUB
VDI-30 / Horn Cutting Head
Ratio 2:1 – IN≠OUT / 6.000 rpm Max.



Axial Saw-Mill for DAEWOO PUMA
BMT-55 / Ø10
Ratio 1:1 – IN=OUT / 6.000 rpm Max.



Axial Saw-Mill for BARUFFALDI
VDI-30 / Special Ø22 DIN-6358
Ratio 1:1 – IN=OUT / 6.000 rpm Max.



Axial Saw-Mill for CMZ
Ø22 Arbor Mill
Ratio 1:1 – IN=OUT / 3.000 rpm Max.

P.040 – Work inside tubes Live tools



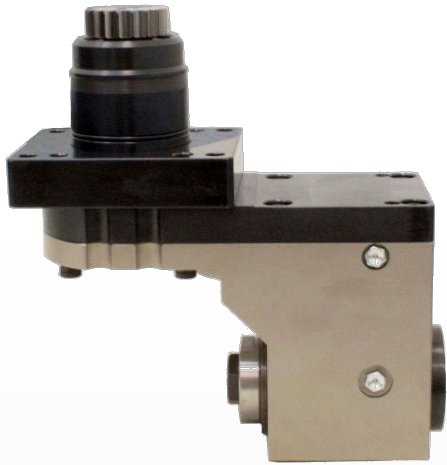
Work inside tubes for DOOSAN
BMT-65 / ER-20A
Ratio 1:1 – IN=OUT / 4.000 rpm Max.



Work inside tubes for DOOSAN
BMT-55 / ER-20A
Ratio 1:1 – IN≠OUT / 6.000 rpm Max.



Work inside tubes for MAZAK
VDI-50 / ER-25A
Ratio 1:1 – IN≠OUT / 4.000 rpm Max.



Y-Axis Adjustable for TRAUB

Cyl. Ø45 / ER-16A

Ratio 1:1 – IN≠OUT / 12.000 rpm Max.



Y-Axis Adjustable for DMG

Cyl. Ø40 / ER-25

Ratio 1:1 – IN=OUT / 5.000 rpm Max.



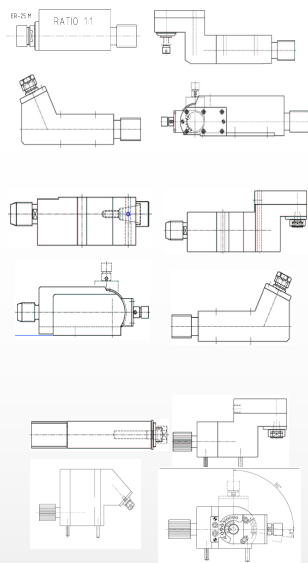
Y-Axis Adjustable for MAZAK

ER-25

Ratio 1:1 – IN=OUT / 4.000 rpm Max.

Production Program

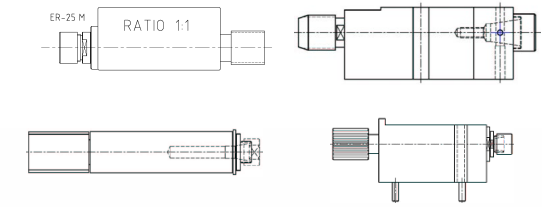
Live tooling uses



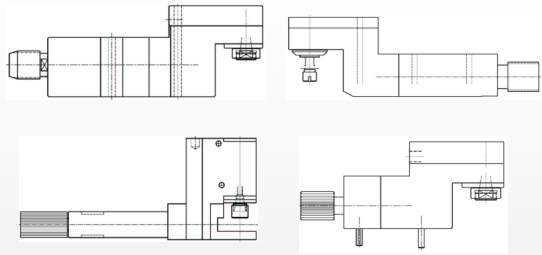
General use



Live tooling uses



Axial use

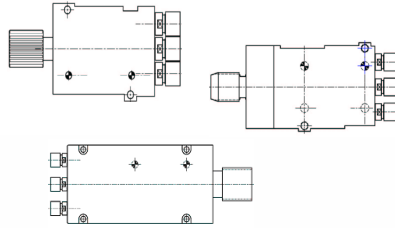


Radial use

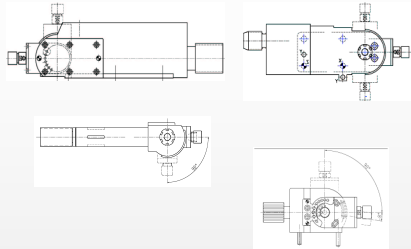
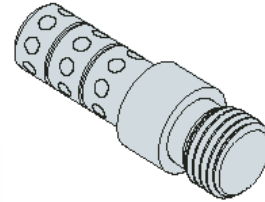


Production Program

Live tooling uses



Multi-spindles

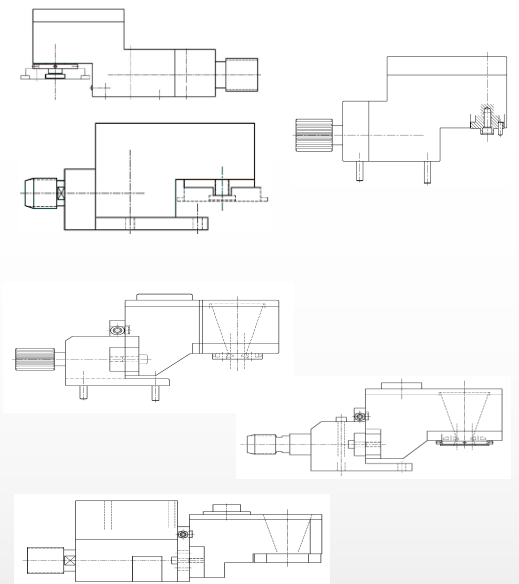


Adjustables



Production Program

Live tooling uses

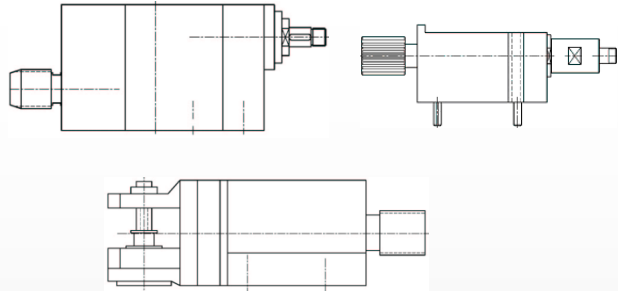


Polygon
maker

Thread
whirling



Live tooling uses

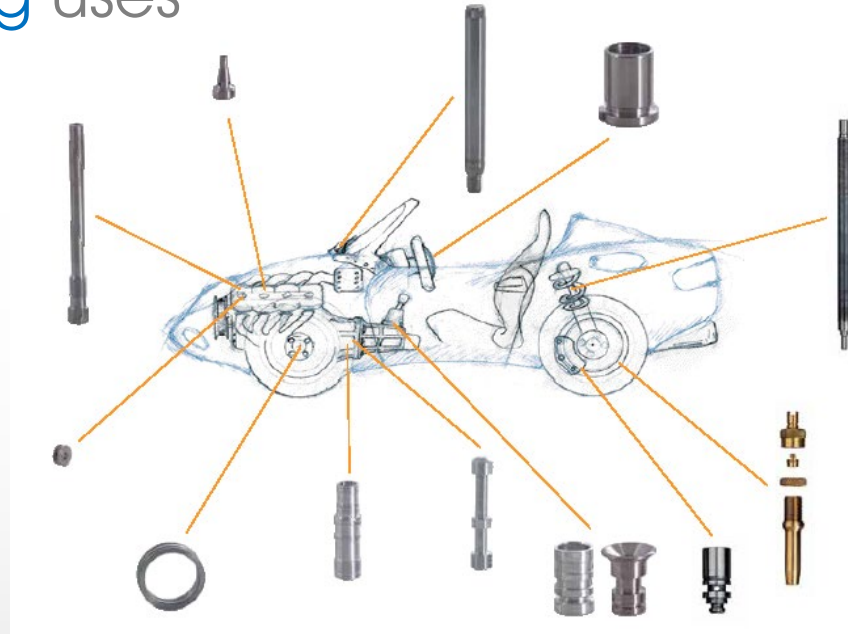


Saw-milling
Milling cutter



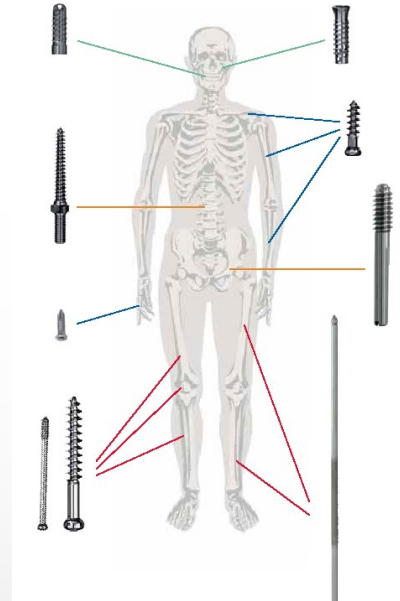
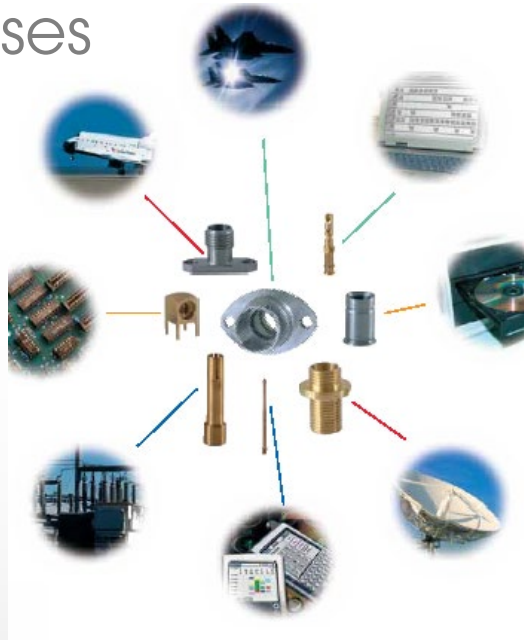
Production Program

Live tooling uses



Production Program

Live tooling uses



Live tooling uses



MADAULA

creative solutions