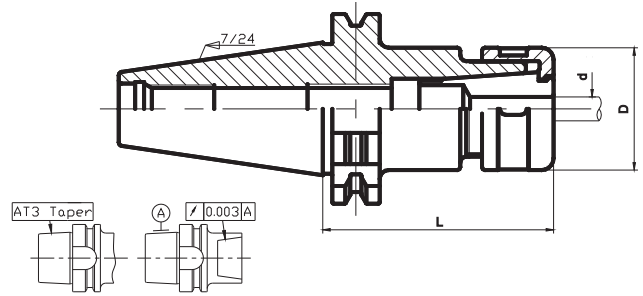
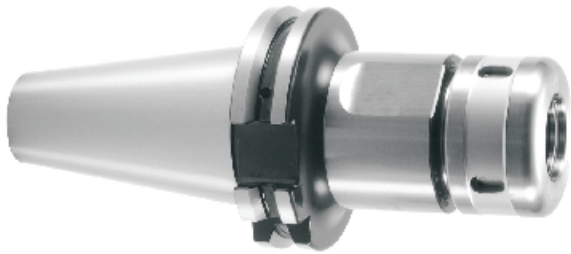


SD精密彈性筒夾刀柄-SK柄

SD PRECISION COLLET HOLDERS-SK(DIN69871-1) SHANK



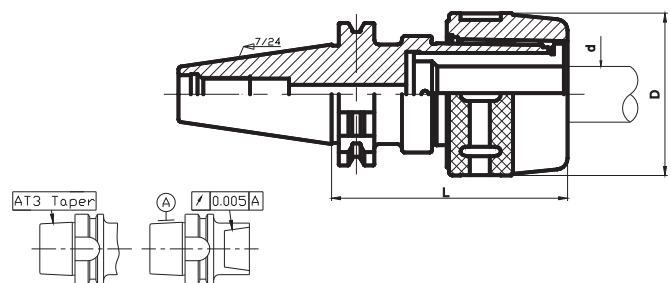
| 訂貨型號 Order Code | L | ØD | 夾持範圍Ød Clamping range | 重量(Kg) Weight |
|--------------------|-----|----|--------------------------|------------------|
| SK40-SD06-80 | 80 | 20 | 1.75~6.0 | 1.0 |
| -SD10-80 | | 29 | 1.75~10.0 | 1.1 |
| -SD16-80 | | 41 | 2.75~16 | 1.3 |
| -SD20-80 | | 50 | 4~20 | 1.4 |
| SD25-80 | | 55 | 6~25 | 1.3 |
| SK50-SD06-100 | 100 | 20 | 1.75~6.0 | 2.4 |
| -SD10-100 | | 29 | 1.75~10.0 | 2.7 |
| -SD16-100 | | 41 | 2.75~16 | 3.2 |
| -SD20-100 | | 50 | 4~20 | 3.5 |
| -SD25-100 | | 55 | 6~25 | 3.6 |

- ★ 標配合扳手。
Standard contains spanner.
- ★ 以上規格均不含筒夾及拉釘，如有需要請另外訂購。
The above model does not contain collets and pull studs, please order them if necessary
- ★ 可更換使用SDP螺母
The SDP nut can replace the SD nut.



EMC強力銑刀刀柄 - SK柄

EMC POWERFUL MILLING HOLDERS-SK(DIN69871-1) SHANK



| 訂貨型號 Order Code | L | ØD | 夾持範圍 Ød Clamping range | 重量(Kg) Weight |
|--------------------|-----|------|---------------------------|------------------|
| SK40-EMC32-100 | 100 | 73.5 | 6-32 | 2.4 |
| SK50-EMC32-100 | 100 | 73.5 | 6-32 | 4.4 |

- ★ 單獨訂購均不帶筒夾及扳手，如有需要請另外訂購，也可訂購套裝產品（附帶筒夾7個及扳手1把）。
The collet and spanner are not included, please order them additionally if necessary. The tool package of whole set is available on request. (include a spanner and 7 collets)



SK柄系列