

Aluminum Double Station Vises

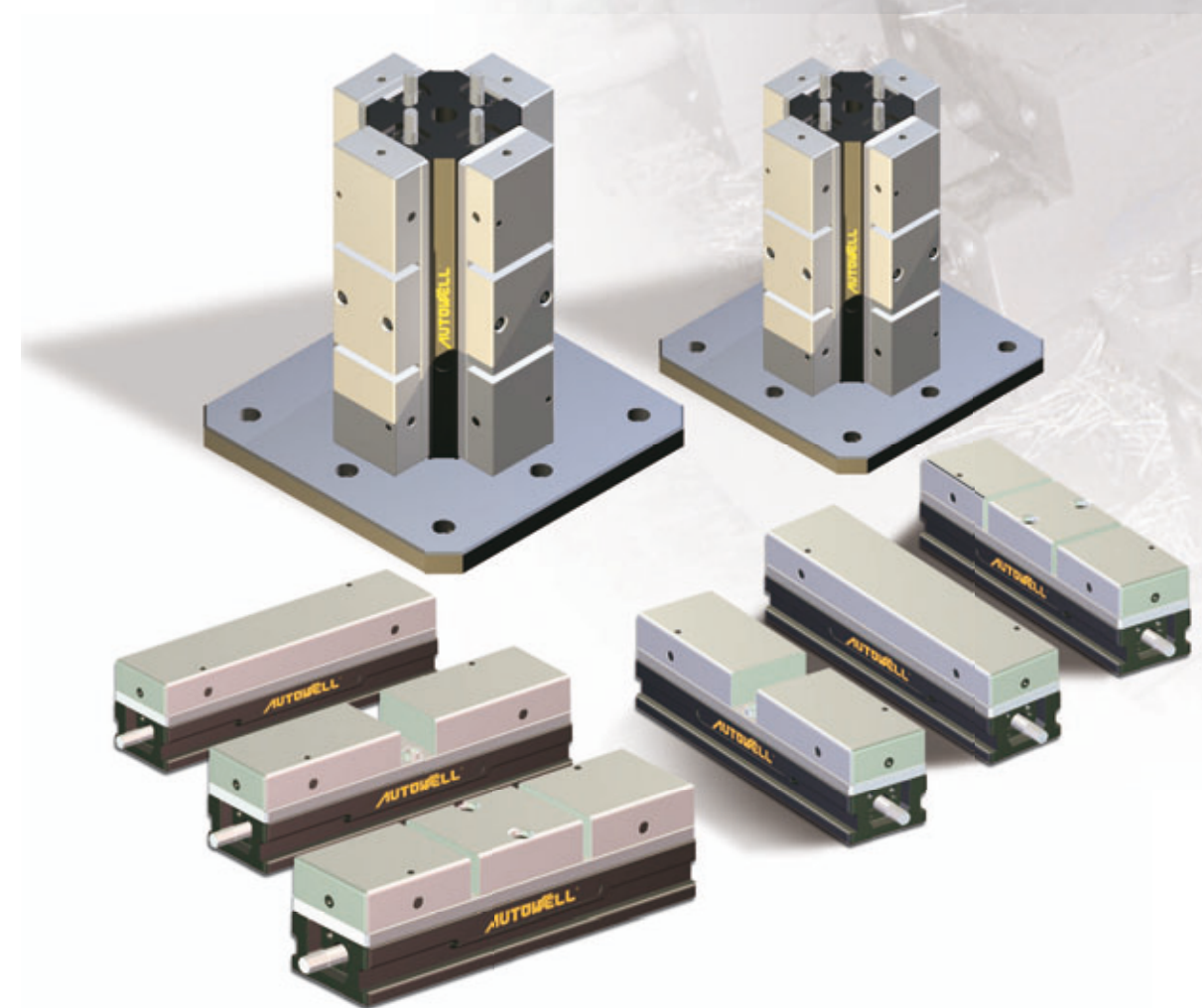
ADS

Workholding

Light, Steady and Flexible

Auto Well has devoted to vises innovation for more efficiency. Aluminum Double Station Vises is made for your vertical or horizontal machining center basic on market requirement. Lighter weight and user friendly compare to other design. The three soft-jaws are shapable to meet your need and takes full advantages.

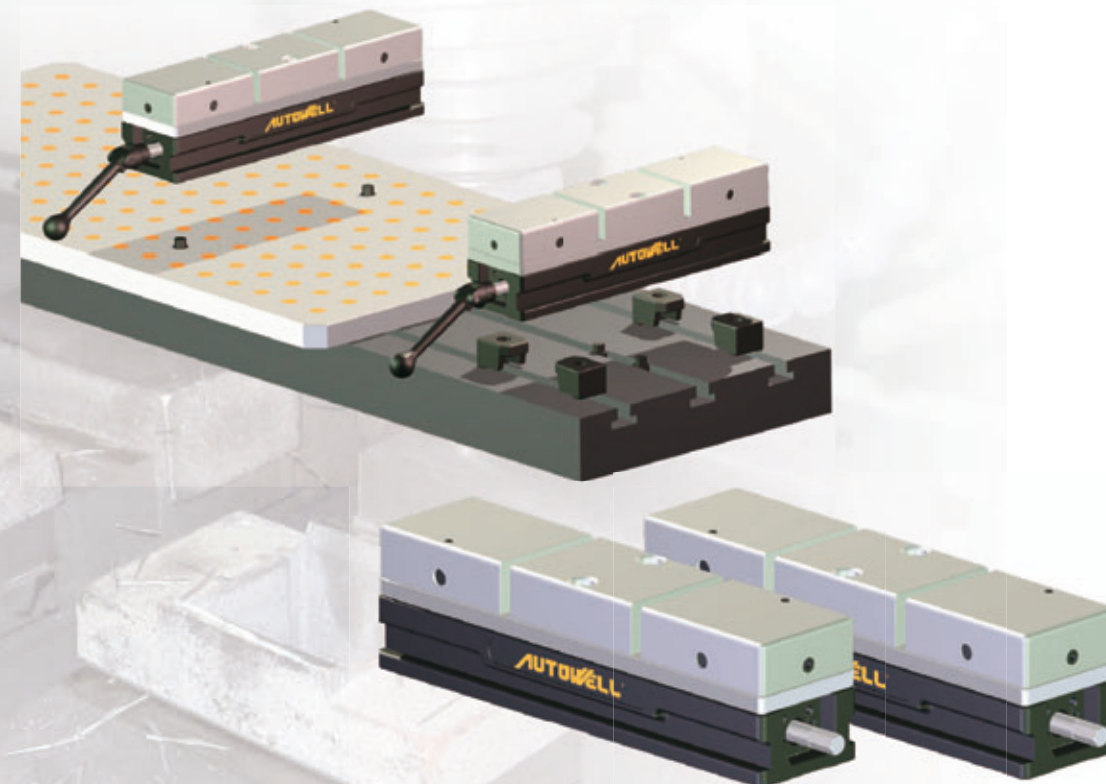
- High-grade aluminum body combines with an alloy steel cover plate enhances base strength and absorbs any machining vibrations.
- Quick changed soft-jaws for multiple machining jobs.
- Clamping force equalization ensures same force while machining two different size workpieces.
- Adjustable Automatically Return Mechanism reduce set-up times through set the off-set distance of movable jaw automatic or manual.



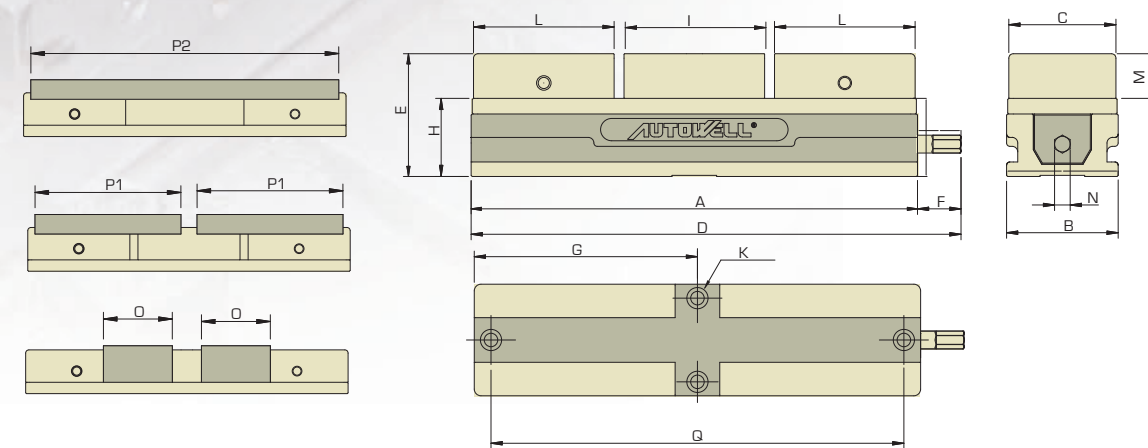
Lockwell Aluminum Vises

ADS-1040, 1250

Workholding



ADS Dimensions



NO	ADS DIMENSIONS																mm/kg	
	A	B	C	D	E	F	G	H	I	K	L	M	N	O	P1	P2	Q	
ADS-1040	400	100	96	439	110	39	200	70	126	ø20	126	40	13	85	180	380	370	
ADS-1250	500	125	121	539	134	39	250	84	157.6	ø20	157.5	50	13	112	225	480	460	